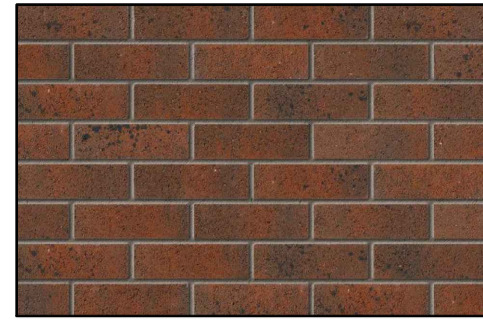


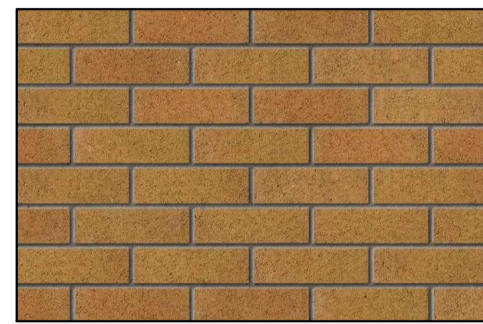
MATERIALS KEY: -

FACING BRICK -



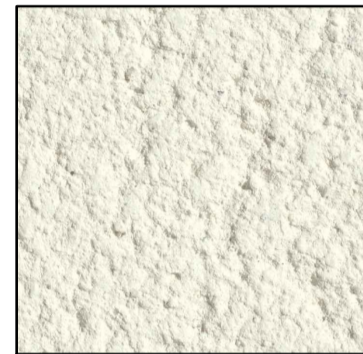
Marshalls - Winterbourne Berry

FACING BRICK -



Marshalls - Amberley Corn

RENDER -



Weber Saint Gobain or Similar to First Floor Elevation

ROOF TILE -



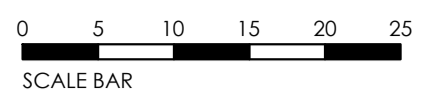
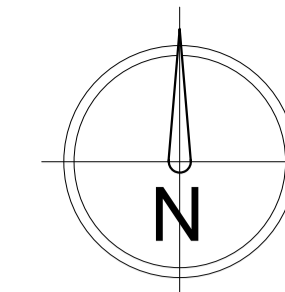
Russell Grampian, Colour Light Grey

MATERIALS - TYPE A

- FACING BRICK -** Marshalls Winterbourne Berry
- DETAIL BRICK -** Marshalls Amberley Corn
- ROOF TILES -** Russell Grampian - Colour Light Grey
- SOFFIT/FASCIA -** White UPVC
- RAINWATER GOODS -** Black Half Round UPVC
- WINDOWS -** White UPVC
- FRONT DOOR -** Single window door

MATERIALS - TYPE B

- FACING BRICK -** Marshalls Amberley Corn
- DETAIL BRICK -** Marshalls Winterbourne Berry
- RENDER -** Weber Saint Gobain or similar to First Floor Elevation
- ROOF TILES -** Russell Grampian - Colour Light Grey
- SOFFIT/FASCIA -** White UPVC
- RAINWATER GOODS -** Black Half Round UPVC
- WINDOWS -** White UPVC
- FRONT DOOR -** Single window door



NO.	DATE	BY	CHKD	DESCRIPTION	APPROV	REV
A	NOV 05	SHW	DH	SCALE BAR ADDED		
A	SEPT 25	DH		AMENDED TO SUIT LATEST LAYOUT		

MATERIALS DISTRIBUTION PLAN						
		Breck Homes 211 Scapellato Court Bamber Bridge Preston PR3 5AW Tel: 0153 587 000 Fax: 0153 587 000 www.breck.co.uk info@breck.co.uk				
PROJECT: SOUTHDEAN ROAD, KNOWSLEY						
DATE:	SCALE:	JOB REF:	DRAWING NUMBER:	REV:		
SEPT 25	1:500 @ A1	-	P02 Southdean Road / Materials Distribution Plan	B		