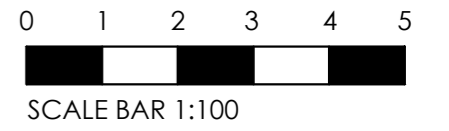
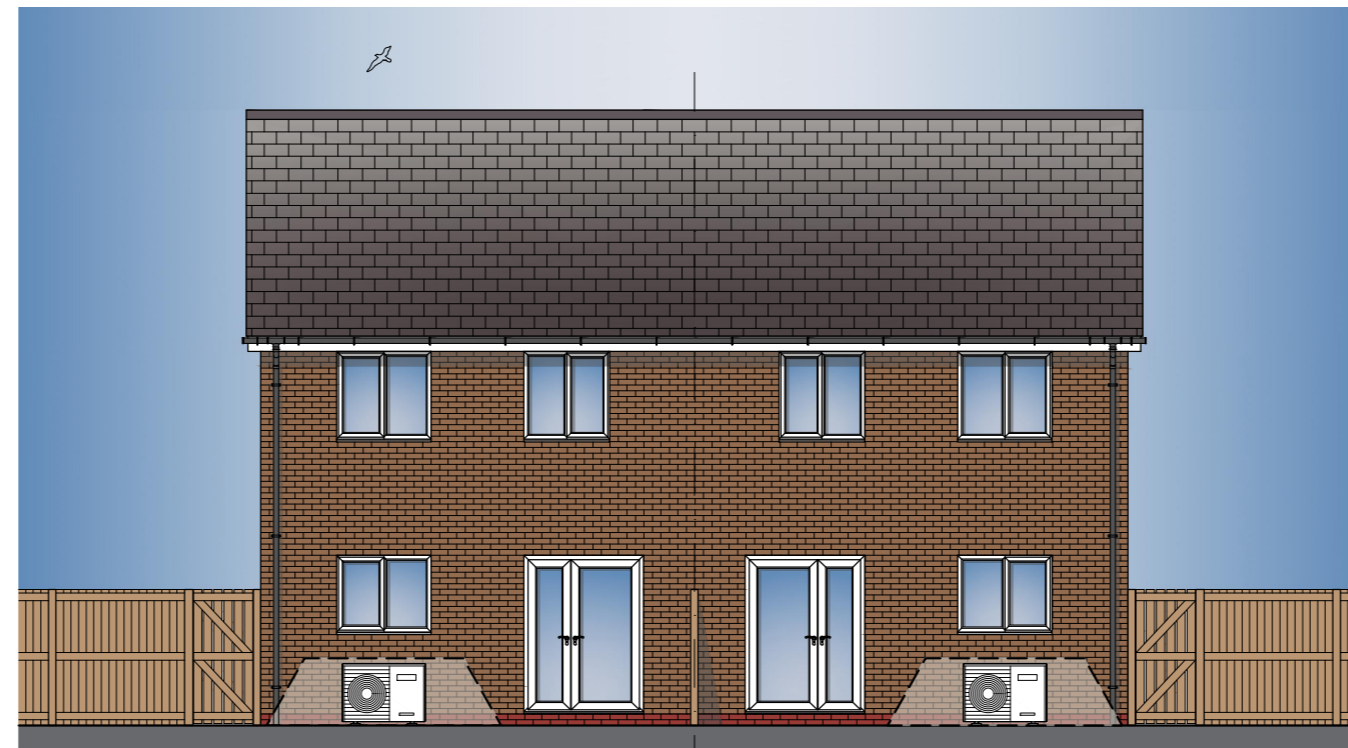


# TYPE H <sup>M4(2)</sup> (3B5P 93 - Lounge to Front) - Semi-Detached (AS/OPP) - 3 Bedroom 5 Person House Type (93m<sup>2</sup>) NDSS & M4(2) Compliant



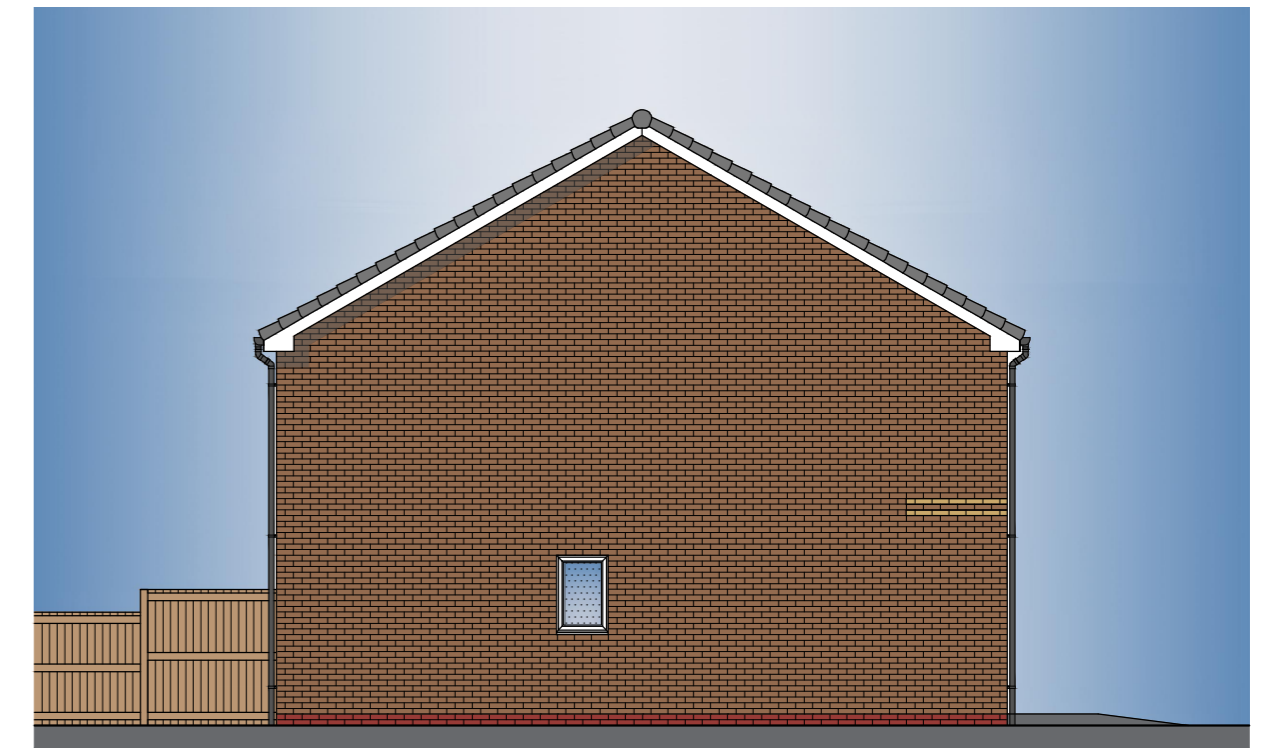
TYPE H <sup>M4(2)</sup> - LfF  
3B5P 93 (AS)  
FRONT ELEVATION

TYPE H <sup>M4(2)</sup> - LfF  
3B5P 93 (OPP)

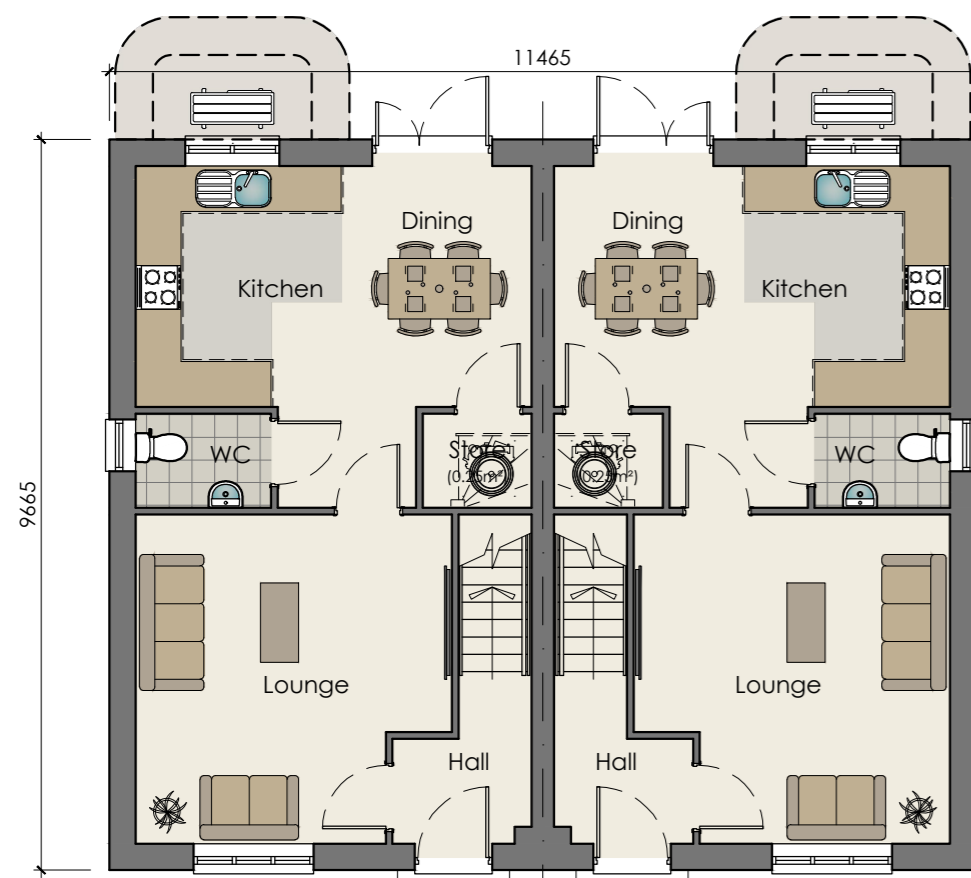


TYPE H <sup>M4(2)</sup> - LfF  
3B5P 93 (OPP)  
REAR ELEVATION

TYPE H <sup>M4(2)</sup> - LfF  
3B5P 93 (AS)

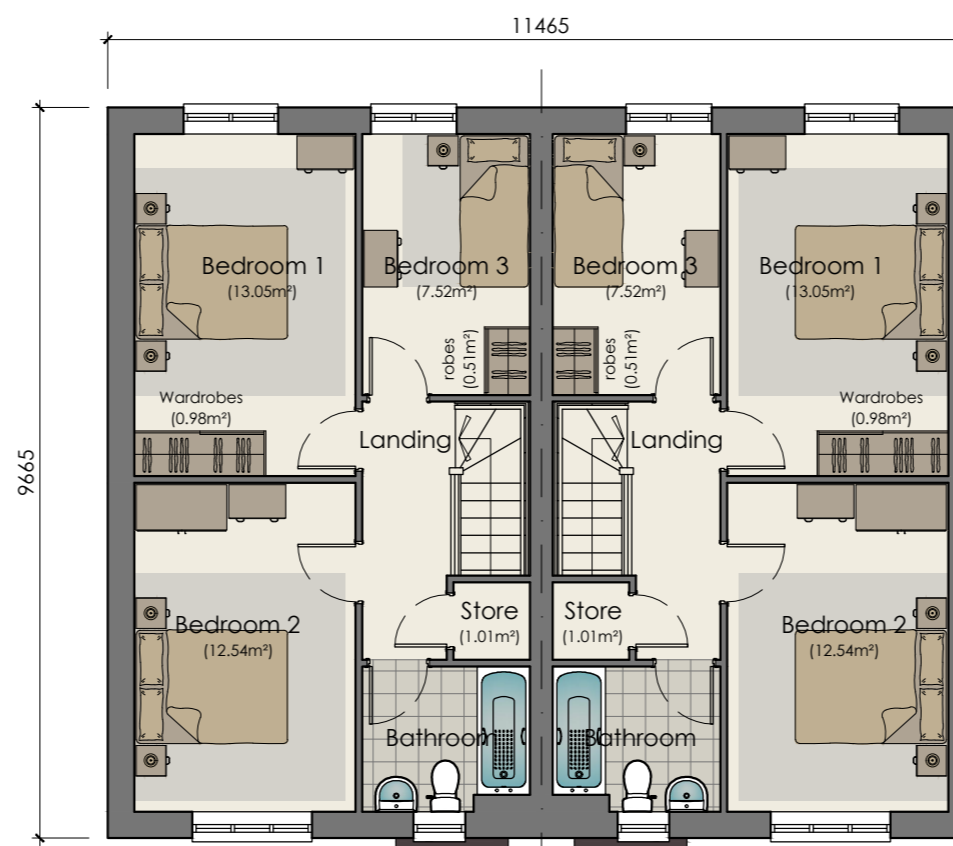


TYPE H <sup>M4(2)</sup> - LfF  
3B5P 93 (AS)  
SIDE ELEVATION



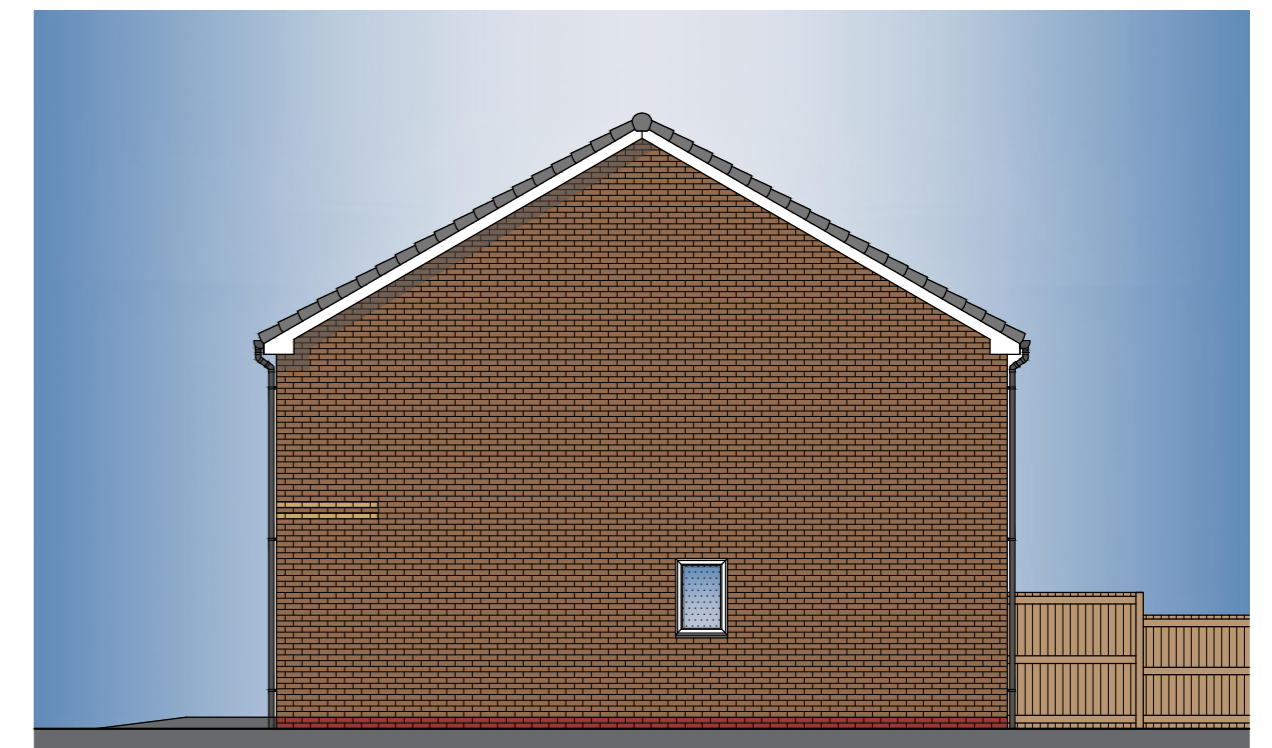
TYPE H <sup>M4(2)</sup> - LfF  
3B5P 93 (AS)  
GROUND FLOOR PLAN

TYPE H <sup>M4(2)</sup> - LfF  
3B5P 93 (OPP)



TYPE H <sup>M4(2)</sup> - LfF  
3B5P 93 (AS)  
FIRST FLOOR PLAN

TYPE H <sup>M4(2)</sup> - LfF  
3B5P 93 (OPP)



TYPE H <sup>M4(2)</sup> - LfF  
3B5P 93 (OPP)  
SIDE ELEVATION

NDSS Compliance Schedule				
Type:	3 Bed 5 Person House Type (2 Storey)			
<b>Gross Internal Area:</b>				
NDSS GIA:	93m <sup>2</sup>	Actual GIA:	93m <sup>2</sup>	
<b>Room Sizes:</b>				
Name:	NDSS Width:	Actual Width:	NDSS Area:	Actual Area:
Bedroom 1	2.75m x 2.75m	2.90m x 4.50m	11.5m <sup>2</sup>	13.05m <sup>2</sup>
Bedroom 2	2.55m x 2.55m	2.90m x 4.32m	11.5m <sup>2</sup>	12.54m <sup>2</sup>
Bedroom 3	2.15m x 2.15m	2.19m x 3.42m	7.5m <sup>2</sup>	7.52m <sup>2</sup>
<b>Storage:</b>				
Name:	Area:			
GF Store	0.25m <sup>2</sup>			
1F Store 1	1.01m <sup>2</sup>			
Robes 1	0.77m <sup>2</sup>			
Robes 2	0.51m <sup>2</sup>			
<b>Total:</b>	<b>2.54m<sup>2</sup></b>			
<b>NDSS:</b>	<b>2.5m<sup>2</sup></b>			

Plot No's 22,23,35,36,  
133 & 134

REV	DATE	SHW	SCALE BAR ADDED
A	NOV.25	SHW	SCALE BAR ADDED
REV	DATE	DRAWN	DESCRIPTION

TITLE: TYPE H - 3 BED 5 PERSON HOUSE TYPE (93m<sup>2</sup>)  
SEMI-DETACHED  
PROPOSED FLOOR PLANS & ELEVATIONS

**Breck Homes**  
20 Sceptre Court  
Bamber Bridge  
Preston  
PR5 6AW  
tel: 01253 587 010  
web: www.breck.co.uk/homes  
hello@breck.co.uk

PROJECT: SOUTHDEAN ROAD, KNOWSLEY

DATE:	SCALE:	JOB REF:	DRAWING NUMBER:	REV:
SEPT.25	1:100 @ A2	-	P23 Southdean Road / Type H 3B5P 93 Semi-Detached	A