

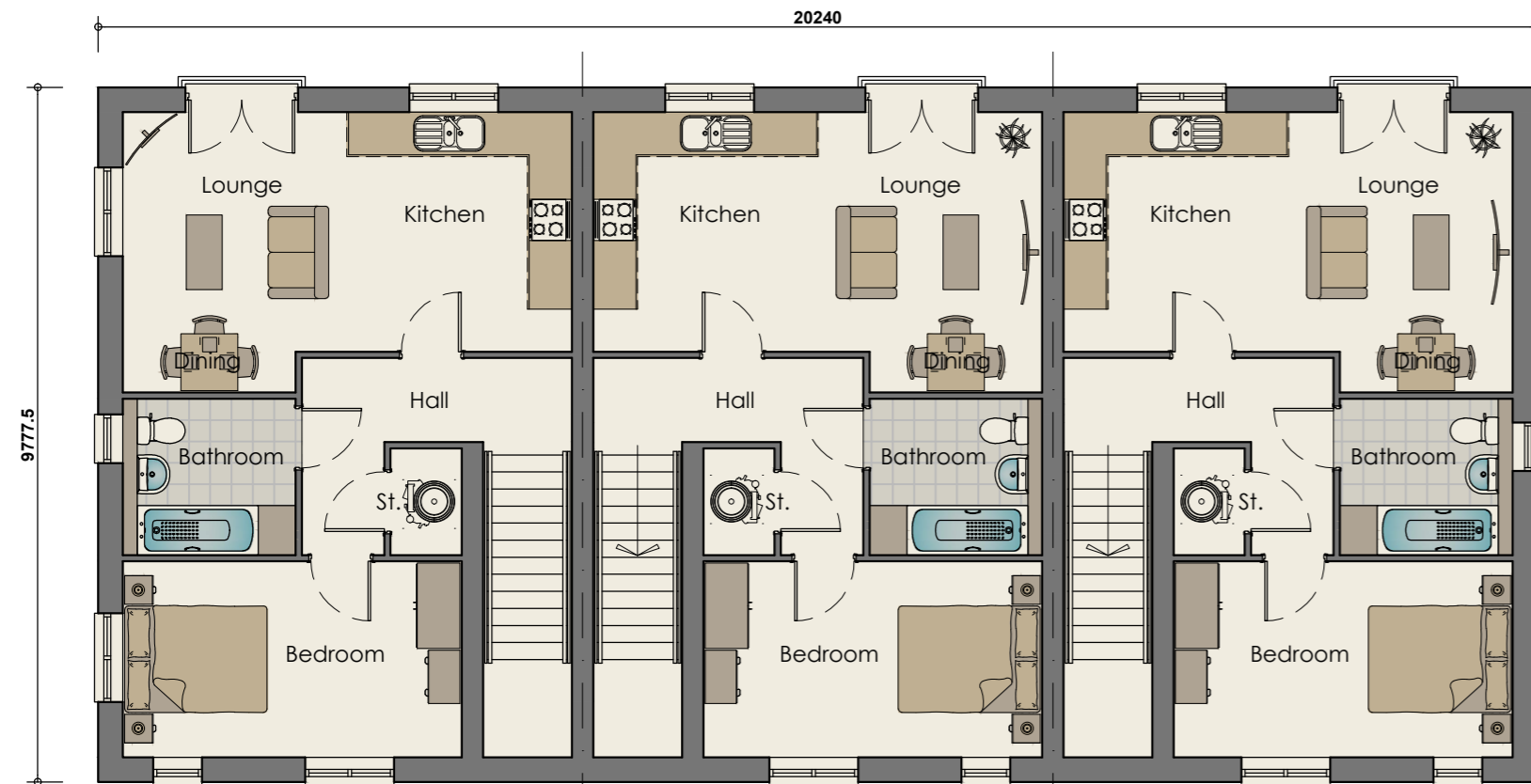
1B2P 50 & 57 MAISONETTE - Terrace of 03 (6 Block) - 1B2P 50 Maisonette (GF) - 1 Bedroom 2 Person Maisonette (50m²)
 1B2P 57 Maisonette (FF) - 1 Bedroom 2 Person Maisonette (57m²)



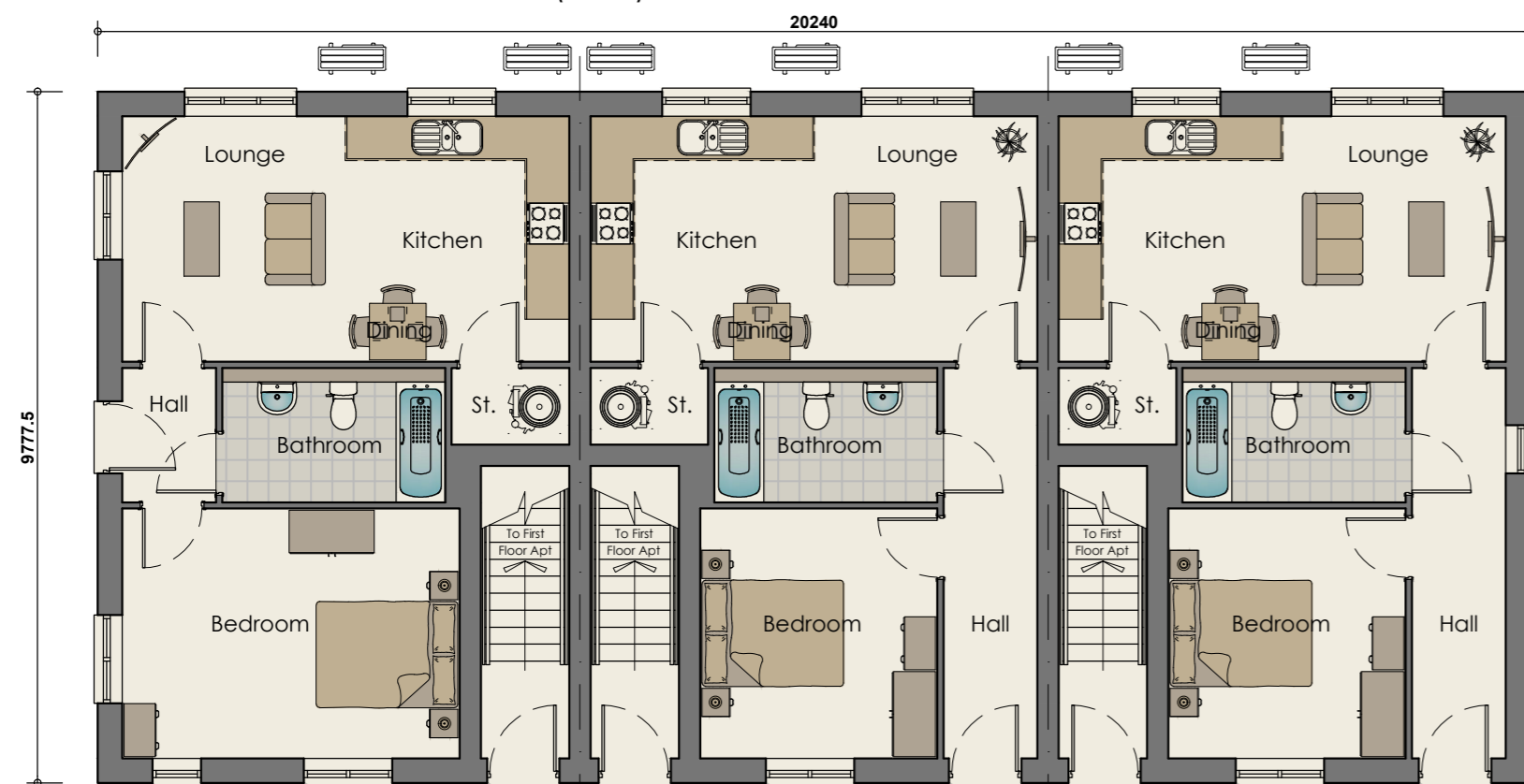
Front Elevation - 1B2P Maisonette 50 & 57
 1 Bedroom 2 Person Maisonette (50m² & 57m²)



Rear Elevation - 1B2P Maisonette 50 & 57
 1 Bedroom 2 Person Maisonette (50m² & 57m²)



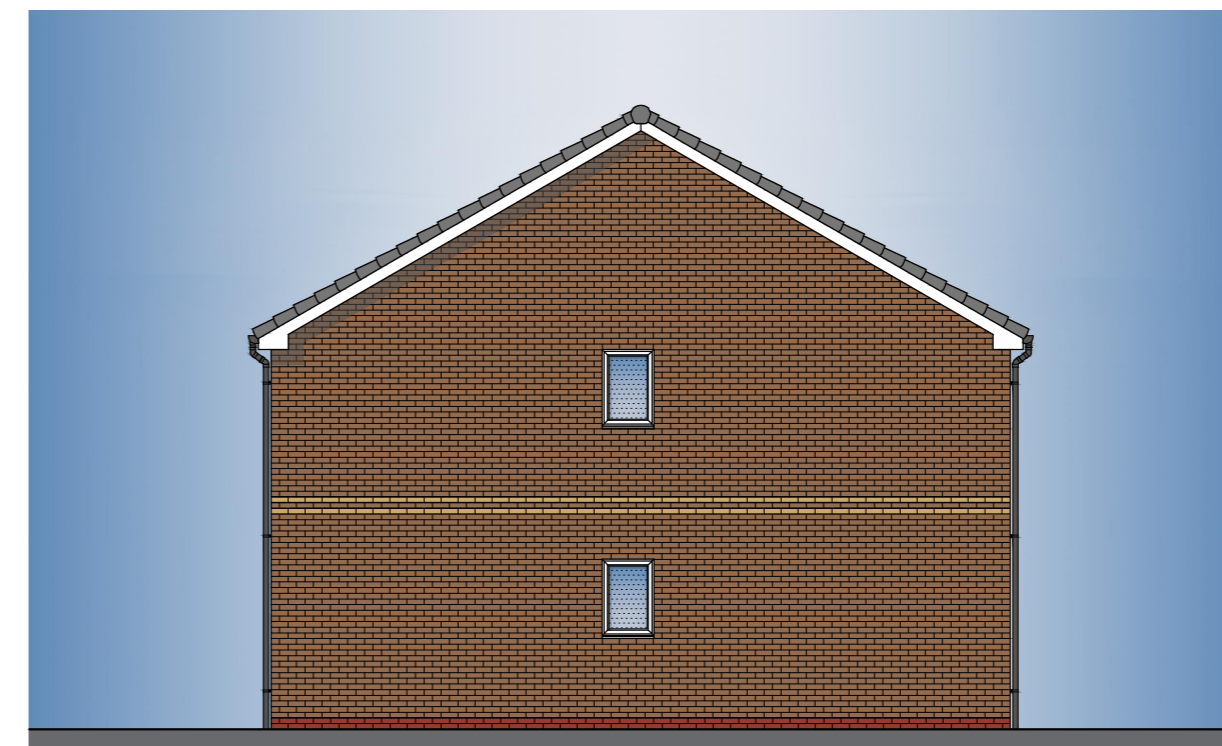
First Floor Plan - 1B2P 57 Maisonette - Type P2
 1 Bedroom 2 Person Maisonette (57m²)



Ground Floor Plan - 1B2P 50 Maisonette - Type P1
 1 Bedroom 2 Person Maisonette (50m²)



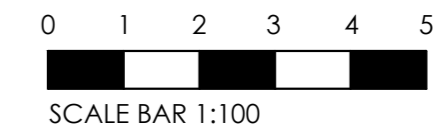
Side Elevation - 1B2P Maisonette 50 & 57
 1 Bedroom 2 Person Maisonette (50m² & 57m²)



Side Elevation - 1B2P Maisonette 50 & 57
 1 Bedroom 2 Person Maisonette (50m² & 57m²)

NDSS Compliance Schedule				
Type: P1 1 Bed 2 Person Maisonette (1 Storey) - Ground Floor				
Gross Internal Area:				
NDSS GIA:	50m ²	Actual GIA:	50m ²	
Room Sizes:				
Name:	NDSS Width:	Actual Width:	NDSS Area:	Actual Area:
Bedroom 1	2.75m x 2.75m	2.75m x 4.75m	11.5m ²	11.7m ²
Storage:				
Name:	Area:			
Store	1.6m ²			
Total:	1.6m²			
NDSS:	1.5m²			

NDSS Compliance Schedule				
Type: P2 1 Bed 2 Person Maisonette (1 Storey) - First Floor				
Gross Internal Area:				
NDSS GIA:	50m ²	Actual GIA:	57m ²	
Room Sizes:				
Name:	NDSS Width:	Actual Width:	NDSS Area:	Actual Area:
Bedroom 1	2.75m x 2.75m	3.3m x 3.5m	11.5m ²	13.1m ²
Storage:				
Name:	Area:			
Store	1.5m ²			
Total:	1.5m²			
NDSS:	1.5m²			



Plot No's 123-128 & 103-108 (Handed)

REV	DATE	SHW	SCALE BAR ADDED.	DESCRIPTION
A	NOV.25	SHW	SCALE BAR ADDED.	
REV	DATE	DRAWN	DESCRIPTION	

TITLE: **TYPE P1 - 1B2P MAISONETTE GF (50m²)**
TYPE P2 - 1 B2P MAISONETTE FF (57m²)
 PROPOSED FLOOR PLANS & ELEVATIONS

Breck Homes
 20 Sceptre Court
 Bamber Bridge
 Preston
 PR5 6AW
 tel: 01253 587 010
 web: www.breck.co.uk/homes
 hello@breck.co.uk

PROJECT: **SOUTHDEAN ROAD, KNOWSLEY**

DATE:	SCALE:	JOB REF:	DRAWING NUMBER:	REV:
SEPT.25	1:100 @ A2	-	P13 Southdean Road / Type P1 & P2 1B2P 50 GF & 1B2P 57 FF	A