

- Notes**
- Planning layout ref. Taylor Wimpey - 25053-1000H-Site Layout_2025-10-09.
 - Topographical survey provided by 'GEO, ref 'G24104 - Stoney Lane, Prescot Topographical and Utility Survey, Dated March 2024.
 - Road details, levels and layout are subject to local authority section 36 Highways approval.

- Legend**
- Site Extents
 - Existing Public Combined Sewer & Manhole
 - Existing Public Surface Water Sewer & Manhole
 - Proposed Adoptable Surface Water Sewer & Manhole
 - Proposed Gully and 1500 Connection
 - Proposed Adoptable Foul Water Sewer & Manhole
 - Proposed Sewer Easement
 - Proposed Finished Floor Level
 - Proposed Foul Water Rising Main

Flow Control Chamber Manhole S21 HB

Hydro International HydroBrake Optimum SHE-0256-4320-2500-4320
 Design head = 2.500 m
 Restricted discharge max. = 42.4 l/sec
 Flow control orifice size 256mm
 Cover level: 59.669 mAOD
 Invert level: 56.750 mAOD

Drainage Strategy - Surface water

Proposed surface water flows generated by the development are proposed to discharge to the existing onsite watercourse MH Ref: M1 located in the southern boundary, at a restricted rate of 42.4 l/s.

The surface water pipe network has been designed to cater for 1:30yr storm events with the online attenuation basin providing additional storage in the 1:100yr+45% Climate Change event.

Connection manhole:
 MH Ref M1 (existing)
 CL 59.761 mAOD
 IL 56.730 mAOD (300Ø)

(Manhole details measured onsite)

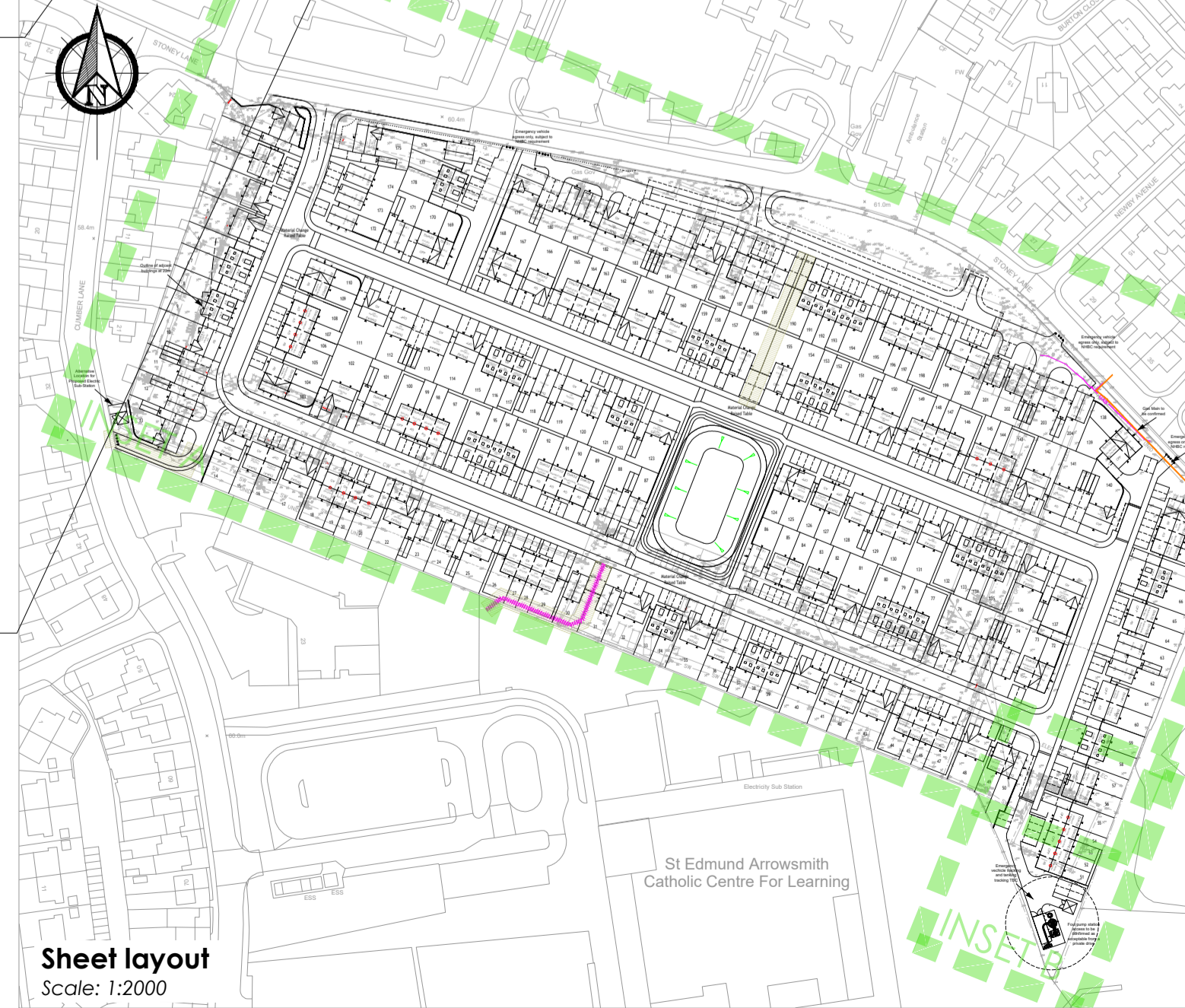
Approval to connect into existing surface water network to be confirmed with LLFA prior to detailed design as a pre-development enquiry.

Further drainage investigation works (CCTV) required to determine existing cover levels, invert levels, pipe dia, manhole dia and general condition.

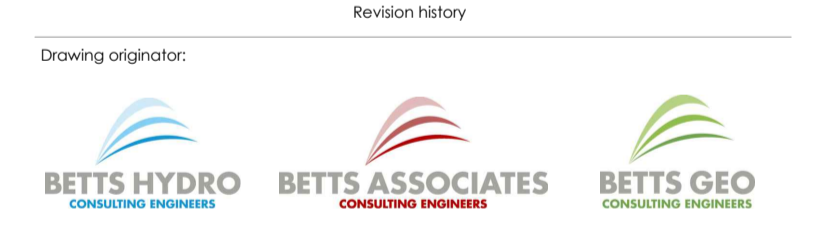
Attenuation Basin

To attenuate flows up to 1:100 year storm + 45% climate change

Base Level: 57.525 m
 Top of Bank Level: 59.525 m
 Freeboard: 300 mm
 Temp maximum storage volume: 1254.412m³



Mark	Date	Details	Revision history	By	Chk
P09	19.01.24	Scale bar shown	TR		
P08	05.12.25	Proposed discharge rate amended	CP		
P07	05.12.25	Amended to suit new planning layout	NR		
P06	15.10.25	Amended to suit layout dated: 09.10.25	TR		
P05	02.10.25	Cellular storage removed & rising main shown	TR		
P04	25.09.25	Amended to suit latest layout	TR		
P03	11.04.25	Plots 13 and 14 FFL changed	NR		
P02	07.04.25	Drainage strategy amended, pond removed, tank added, pipes downsized.	NR		
P01	04.04.25	Preliminary issue for review	NR		



Client: **Taylor Wimpey**

Project title: **Glen Dimplex Stoney Lane**

Drawing title: **Preliminary Drainage Layout**

Scale: **As Shown** for the original size of A1

Drawn by: NR | Checked by: | Posed by: | Date: **Apr 2025**

Drawing status: **Technical Due Diligence**

Job No: TAY143 | Drawing No: GDX | Project Origin: BET | Volume: ZZ | Level: XX | Type: DR | Discip: C | Number: 0001 | Revision: P09

Do not scale this drawing
 6-7 Old Marsh Farm Barns, Welsh Road, Sealand, Flintshire, CH5 2LY
 enquiries@betts-associates.co.uk | Chester 01244 288178 | Manchester 0161 413331