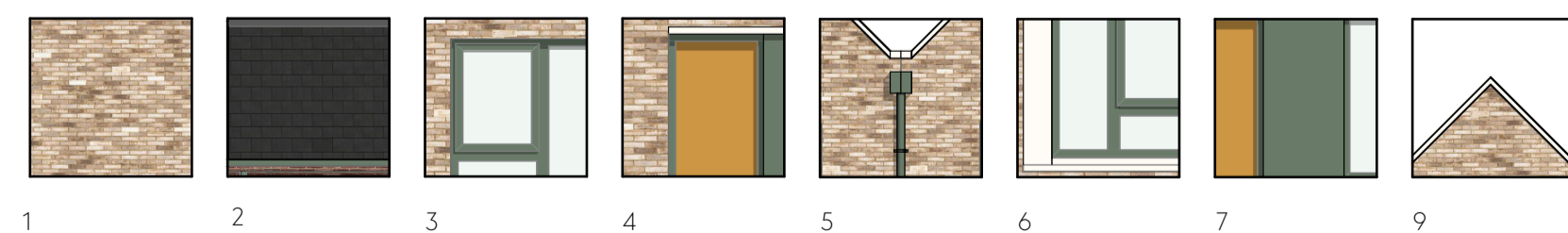


Material Key



1. Brick, colour varies, sand coloured natural mortar.
2. Dark grey concrete slate roof tiles.
3. Windows and back door uPVC in olive green colour.
4. Composite door, oak colour.
5. UPVC downpipes and gutters, with matching fascia dark green colour.
6. Wetcast cill, head, coping and window surrounds, off white colour.
7. Fibre cement green infill panel.
9. UPVC linear verge flashing

This drawing is the property of GWP Architects. Copyright is reserved by them and the drawing is issued on the condition that it is not copied, reproduced, altered or displayed in any way without the express written consent of GWP Architects. All drawings and specifications should be read in conjunction with the project health and safety plan. Any possible conflicts should be presented to the Planning Consultant. All work to be carried out in accordance with current Building Regulations. Contractors must verify all dimensions at the job before commencing any work or making shop drawings. Written dimensions should be taken. Do not scale off drawing. Do not take digital dimensions from the drawing. Any discrepancies to be reported to the Architect.

0 1m 5m
Scale - 1:100 @A1

Rev	Date	Comment	Dr	Ch
P06	24.10.25	Planning Issue	MK	DT
P05	30.09.25	General Update	MK	DT
P04	27.08.25	General updates	VT	DT
P03	20.09.24	General updates and location plan	MK	JB
P02	03.07.24	General Update	JB	DT
P01	17.05.24	First Issue	EA	CT

Client	Livv Housing Group
Job Title	Block 10 Architectural Elevations
Name	(529)2316-GWP-01-XX-D-A-(PA)-0039
Scale	A1@1:100
Revision	P06
Drawn/Checked	VT / DT
First Issue	17.05.24
Drawing Status	S2 - Planning

GWP Architects (529)2316
 Livv Housing Group
 CHARTERED ARCHITECTS
 INTERIOR DESIGNERS
 SPACE PLANNERS
 PROJECT MANAGERS
 LANDSCAPE ARCHITECTS
 03 01 Tower Works, 2 Globe Road, Leeds LS11 5DG
 +44(0)113 266 6044 (t) +44(0)113 268 1859 (f)
 architecture@gwp-arch.com | www.gwp-arch.com