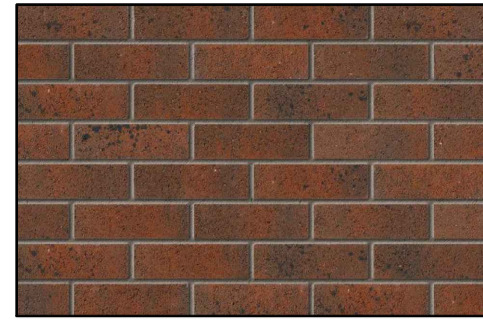


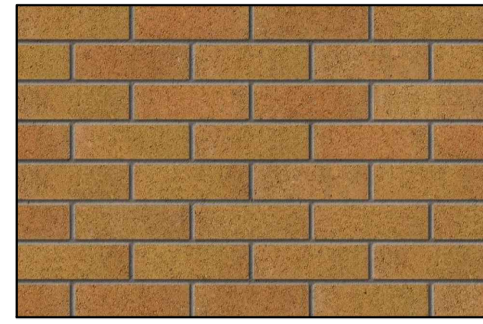
MATERIALS KEY: -

FACING BRICK -



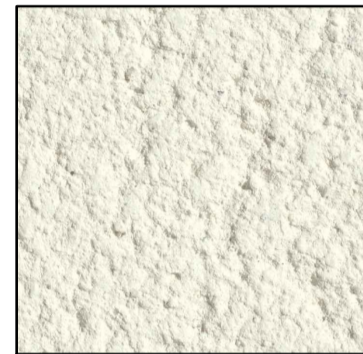
Marshalls - Winterbourne Berry

FACING BRICK -



Marshalls - Amberley Corn

RENDER -



Weber Saint Gobain or Similar to First Floor Elevation

ROOF TILE -



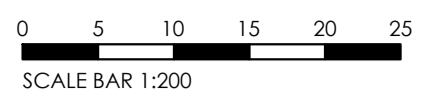
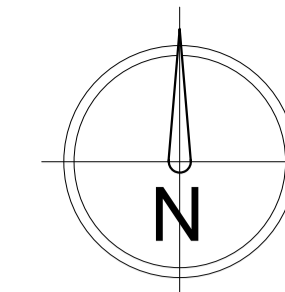
Russell Grampian, Colour Light Grey

MATERIALS - TYPE A

- FACING BRICK -** Marshalls Winterbourne Berry
- DETAIL BRICK -** Marshalls Amberley Corn
- ROOF TILES -** Russell Grampian - Colour Light Grey
- SOFFIT/FASCIA -** White UPVC
- RAINWATER GOODS -** Black Half Round UPVC
- WINDOWS -** White UPVC
- FRONT DOOR -** Single window door

MATERIALS - TYPE B

- FACING BRICK -** Marshalls Amberley Corn
- DETAIL BRICK -** Marshalls Winterbourne Berry
- RENDER -** Weber Saint Gobain or similar to First Floor Elevation
- ROOF TILES -** Russell Grampian - Colour Light Grey
- SOFFIT/FASCIA -** White UPVC
- RAINWATER GOODS -** Black Half Round UPVC
- WINDOWS -** White UPVC
- FRONT DOOR -** Single window door



NO.	DATE	BY	CHKD	SCALE BAR ADDED	AMENDED TO SUIT LATEST LAYOUT	APPROV	CHKD
A	NOV 05	SHW	DH				
A	SEPT 25						

REV	DATE	DRAWN	DESCRIPTION	APPROV	CHKD
1					

Breck Homes 211 Scapellato Court Bamber Bridge Preston PR3 5AW Tel: 01524 887 000 Fax: 01524 887 001 www.breck.co.uk info@breck.co.uk	
PROJECT:	SOUTHDEAN ROAD, KNOWSLEY
DATE:	SEPT 25
SCALE:	1:500 @ A1
JOB REF:	P02 Southdean Road
DRAWING NUMBER:	Materials Distribution Plan
REV:	B