

6.2 PARKING STRATEGY

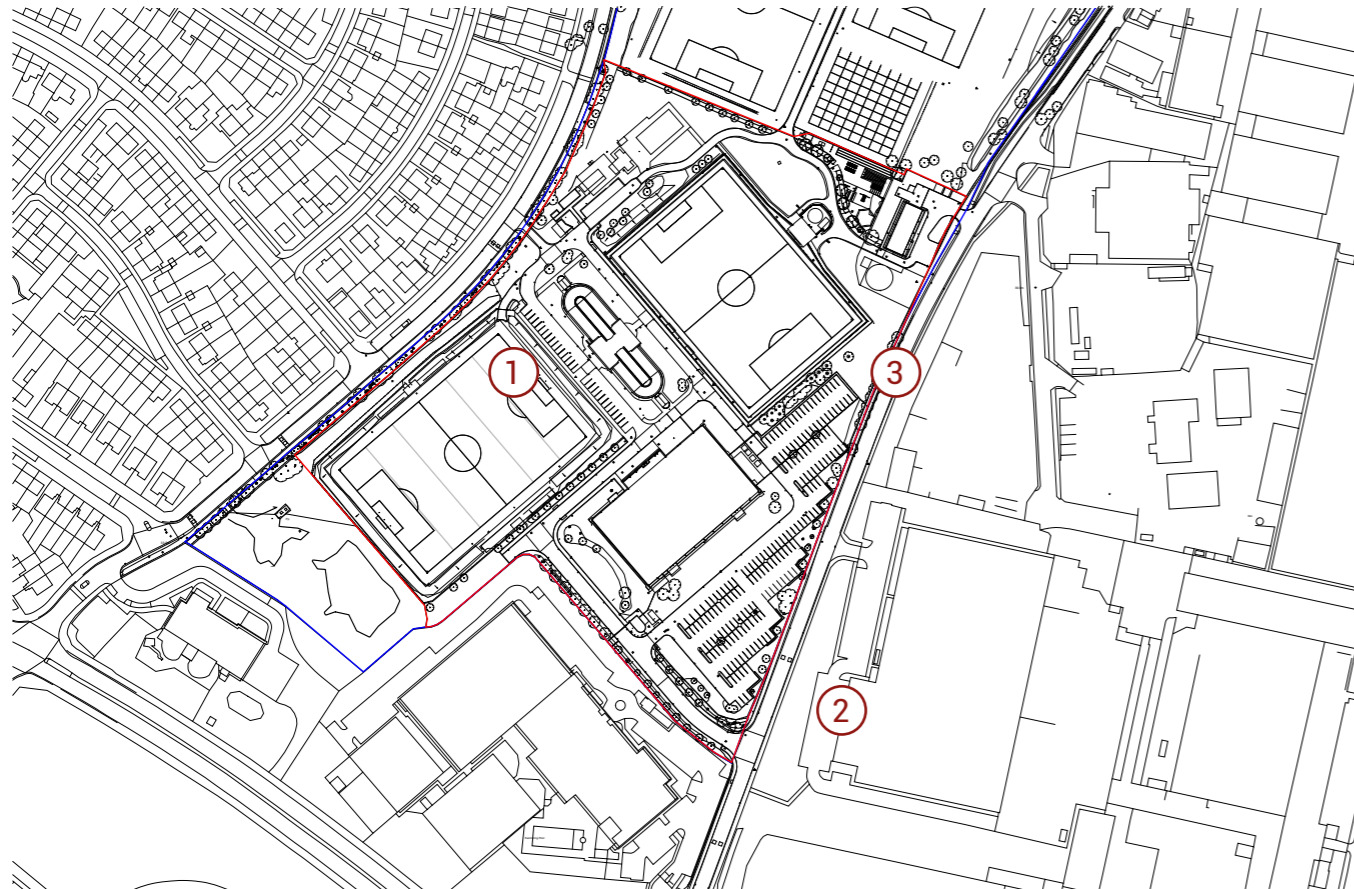
ADDITIONAL PARKING

EXISTING

The existing site comprises of 208 spaces plus 7 accessible spaces spread across three main areas.

- ① 28 + 2 accessible spaces
- ② 112 + 5 accessible spaces
- ③ 68 spaces

TOTAL LOSS = 28 + 2 ACCESSIBLE

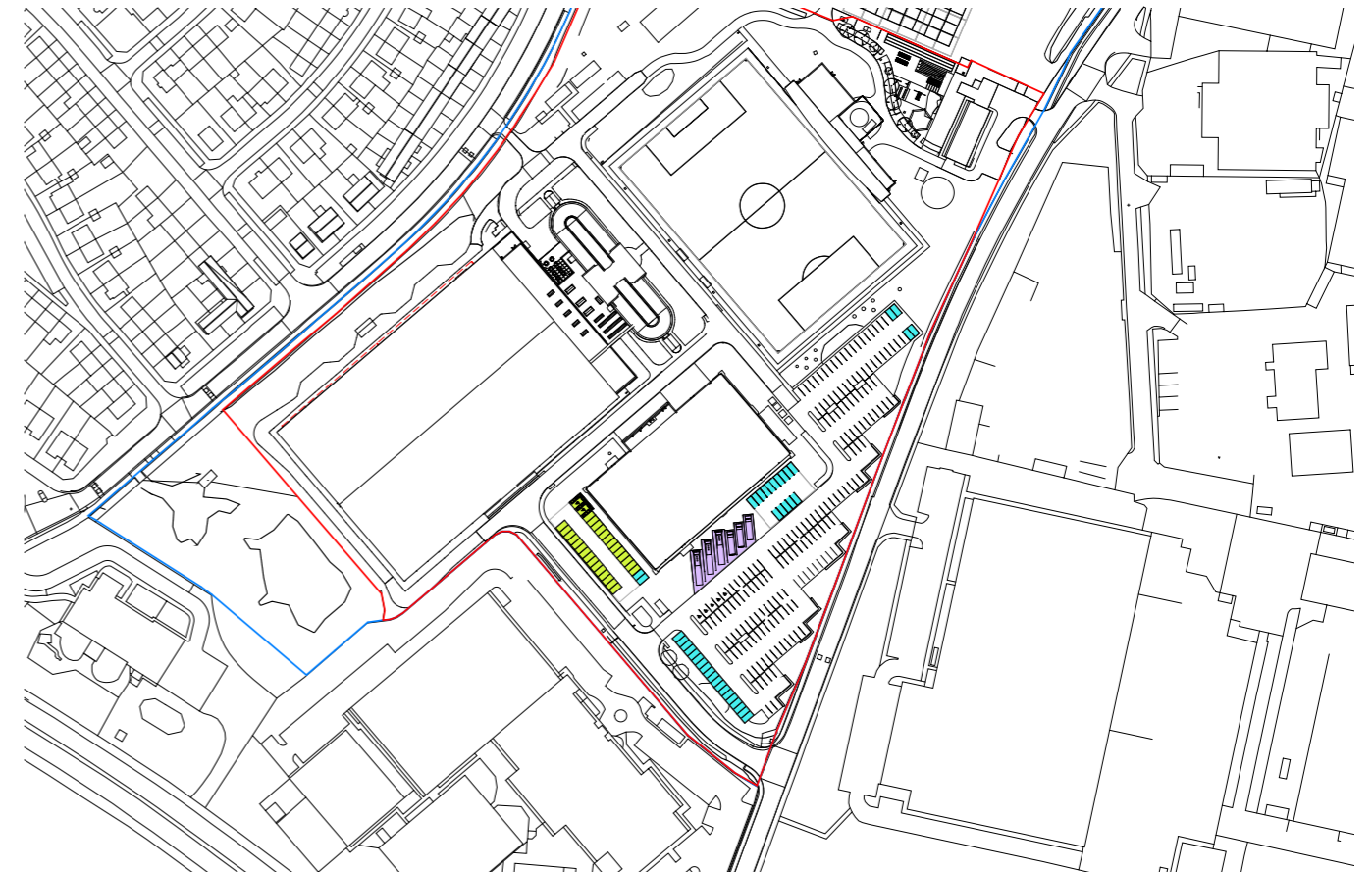


PROPOSED

The proposal seeks to replace all parking provision lost in the development as well as options for increasing the parking provision on site.

- 28 + 2 accessible spaces relocated
- 3 minibus and 3 coach spaces
- An additional 40 spaces

NET GAIN = 40 SPACES PLUS 3 MINIBUS AND 3 COACH SPACES



6.3 INCLUSIVITY 2010 EQUALITY ACT

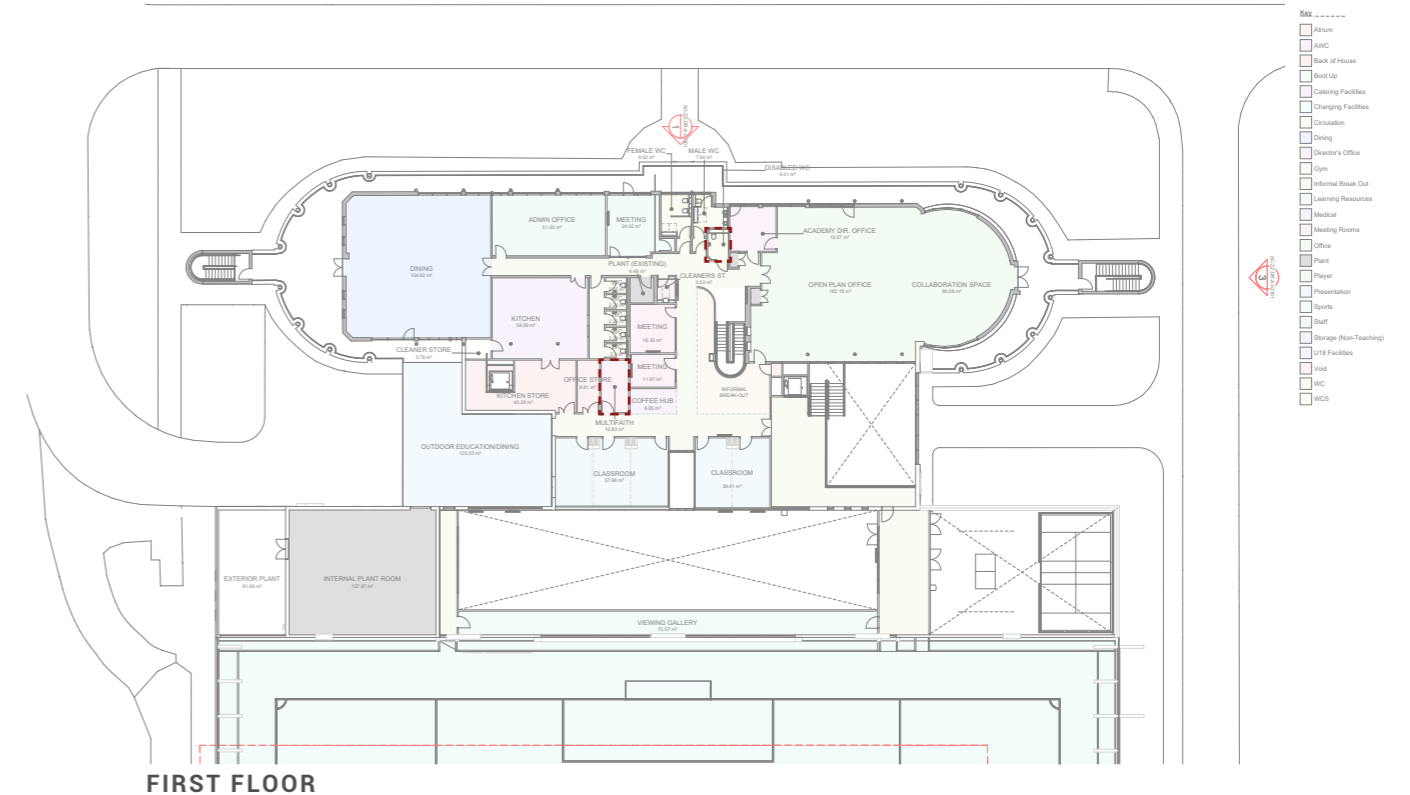
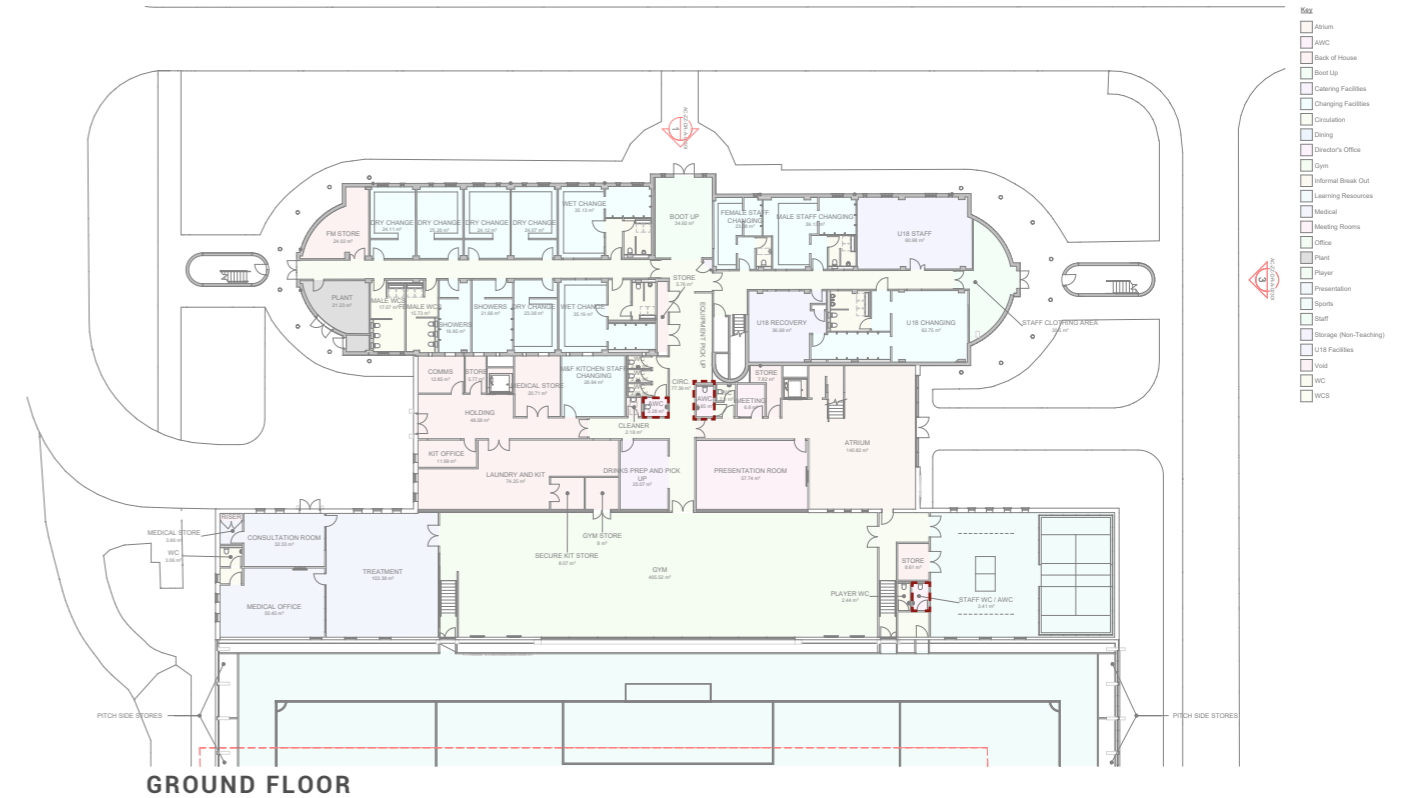
ACCESSIBILITY

The provision of four Accessible WCs (AWCs) within the building supports compliance with the Equality Act 2010 by ensuring that sanitary facilities are inclusive, equitable, and accessible to all users, including those with disabilities or reduced mobility.

Providing adequate corridor widths throughout the building helps support compliance with the Equality Act 2010 by ensuring that circulation routes are accessible, safe, and usable for all

INCLUSIVITY

The inclusion of a multi-faith room supports the principles of the Equality Act 2010 by providing a dedicated, inclusive space for people of all faiths—or none—to pray, reflect, or observe personal spiritual practices. Routes are accessible, safe, and usable for all individuals, including wheelchair users and those with mobility impairments.



VERIFICATION SHEET

PROJECT	Liverpool FC - Academy Masterplan	TITLE	Design and Access Statement
DATE	01.10.25	REFERENCE	25009-KSS-XX-XX-PP-A-00008.indd
SUITABILITY	SP	REVISION	P04

Revision	Date	Description	Issued by	Checked by
P01	01.10.25	For Planning Submission	SJ	EA
P02	02.12.25	For Planning Submission	SJ	EA
P03	02.12.25	For Planning Submission	SJ	EA
P04	12.12.25	For Planning Submission	SJ	EA

Suitability codes to BS1192:
S0 WIP, **S1** Suitable for Coordination, **S2** Suitable for Information, **S3** Suitable for Review & Comment, **S4** Suitable for Stage Approval, **S6** Suitable for PIM Authorisation, **S7** Suitable for AIM Authorisation,
SB Suitable for Building Control Approval, **SP** Suitable for Planning Approval, **ST** Suitable for Tender,
A1, A2, An, Approved and accepted as stage complete, **B1, B2, Bn**, Partially Signed Off, **CR** As Construction Record documentation

Template version
 KSS_PP-WS_v2



KSS

For further information please contact:

EDWARD ATKINS

ed.atkins@kssgroup.com

London 1 James Street London W1U 1DR | Kent 7 Blighs Walk Sevenoaks TN13 1DB

KSSGROUP.COM ☎ +44 (0)20 7907 2222