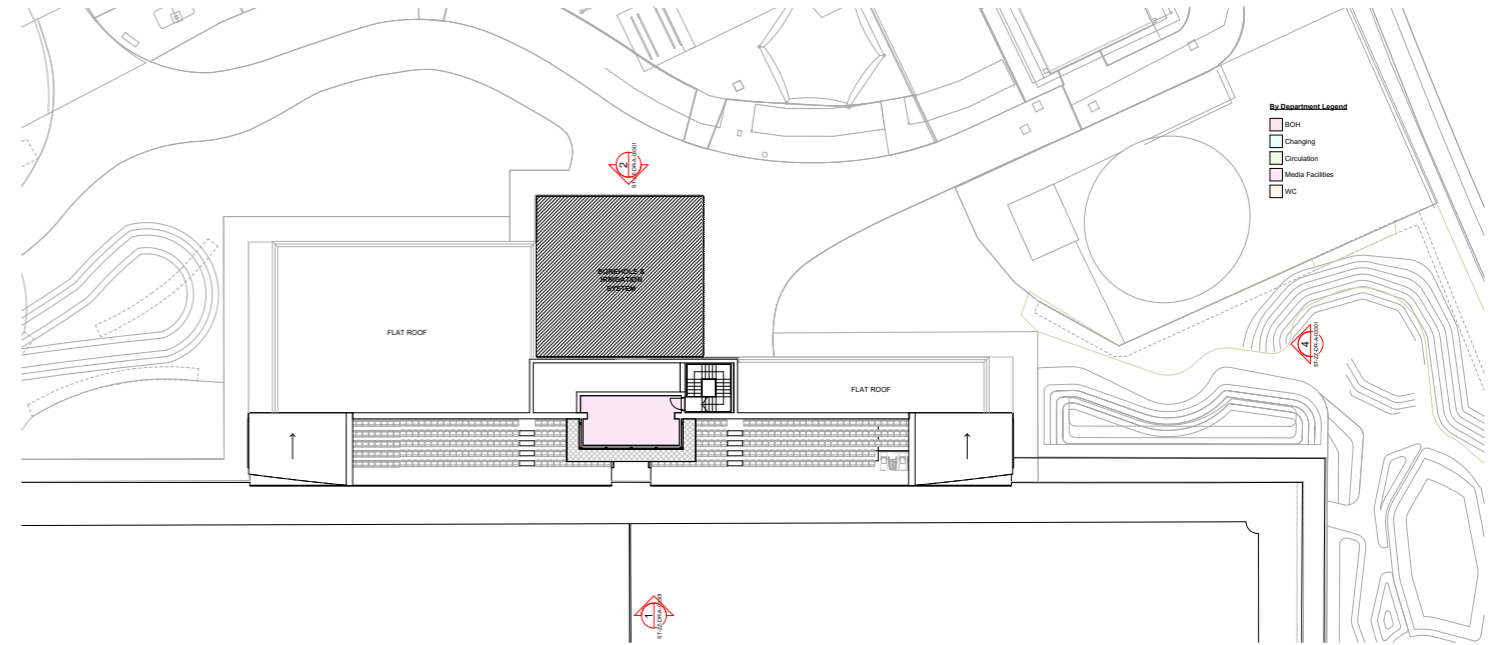


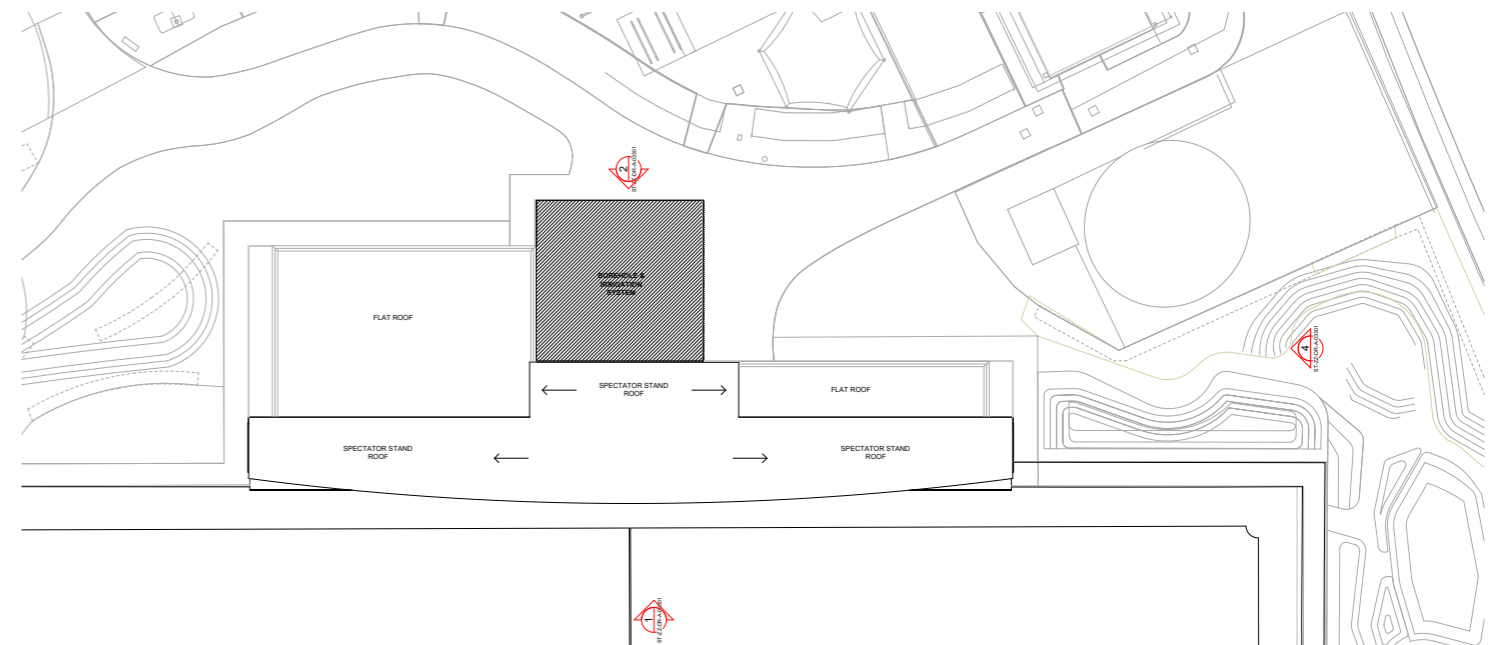
# 4.31 THE SPECTATOR STAND LAYOUT

## CAMERA GANTRY

The first floor of the spectator stand houses the camera gantry, accessed via an external stair.



FIRST FLOOR - GANTRY LEVEL

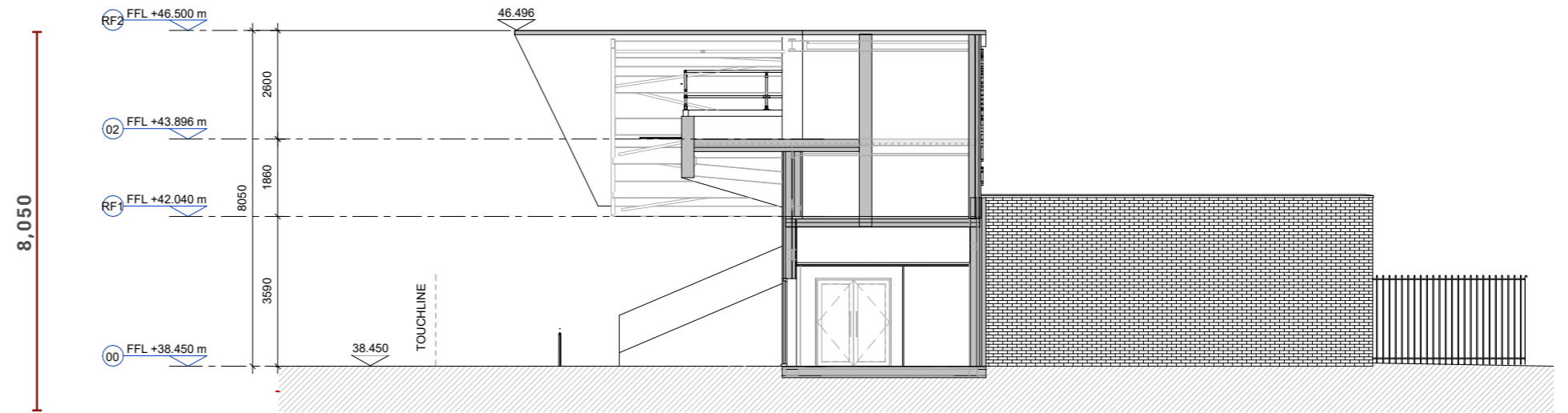


ROOF LEVEL

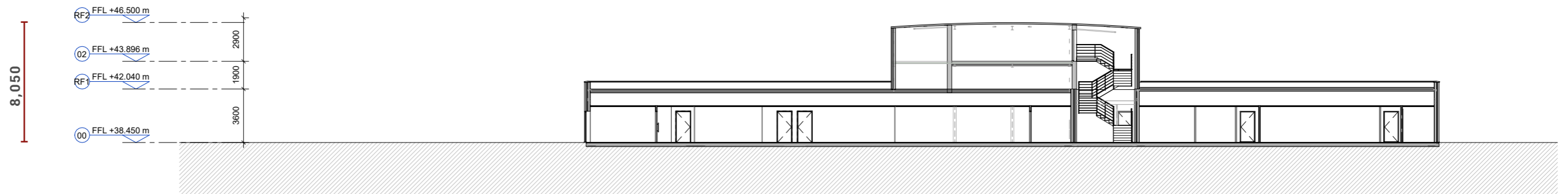
# 4.32 THE SPECTATOR STAND SCALE

## SCALE

The overall height of the spectator stand with camera gantry is approximately 8 metres.



SPECTATOR STAND SHORT SECTION



SPECTATOR STAND LONG SECTION

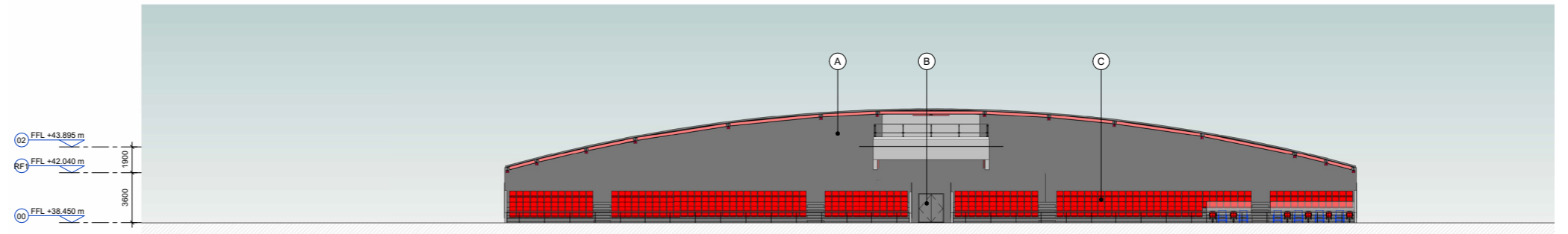
# 4.33 THE SPECTATOR STAND APPEARANCE

## PITCH ELEVATION

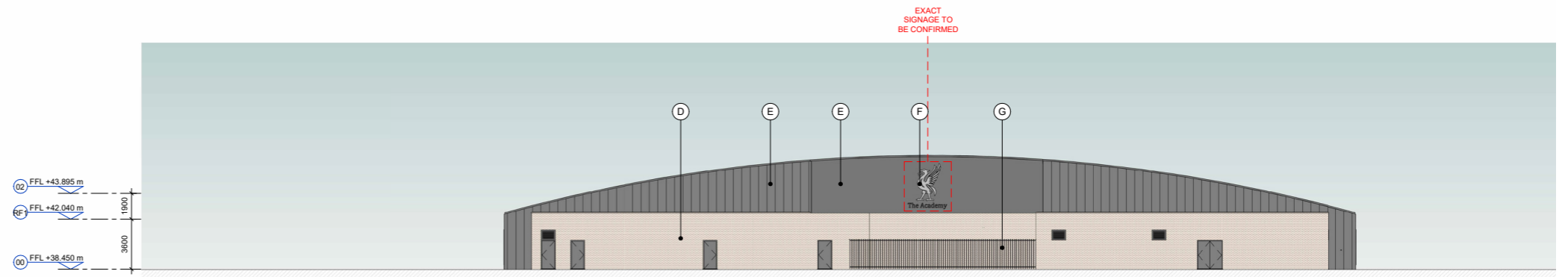
The elevation from the pitch features a curved roof profile with grey cladding to match the academy.

## SIDE ELEVATION

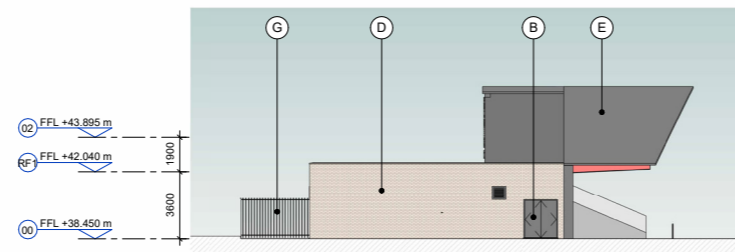
The sides of the stand will be buff brick.



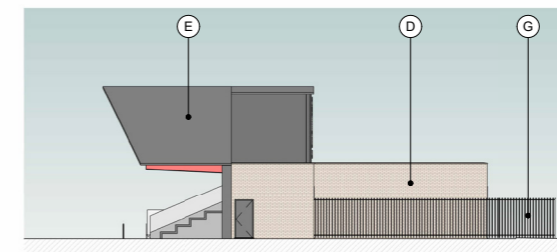
SPECTATOR STAND PITCH SIDE ELEVATION



SPECTATOR STAND NORTH ELEVATION



SPECTATOR STAND SIDE ELEVATIONS



### MATERIALS

- (A) STEEL WALL CLADDING
- (B) GREY METAL DOOR
- (C) RED SPECTATOR SEATS
- (D) BUFF BRICK
- (E) GREY METAL CLADDING
- (F) SIGNAGE
- (G) METAL BOREHOLE FENCE



# LANDSCAPING

