

4.23 THE ACADEMY

ACADEMY ENTRANCE



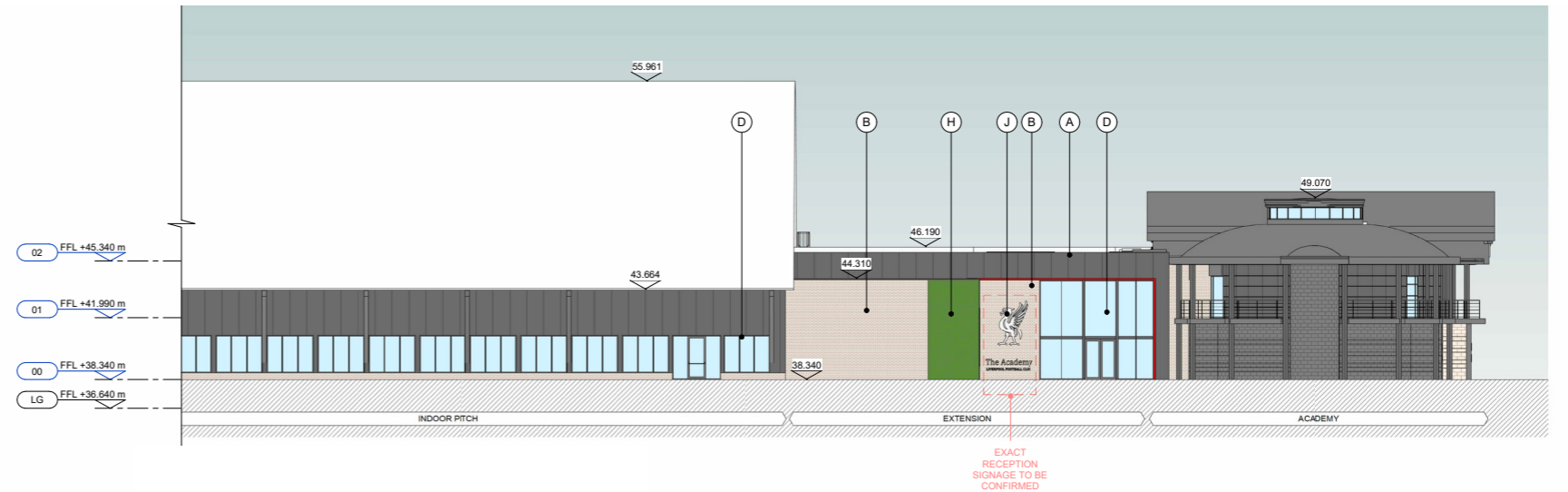
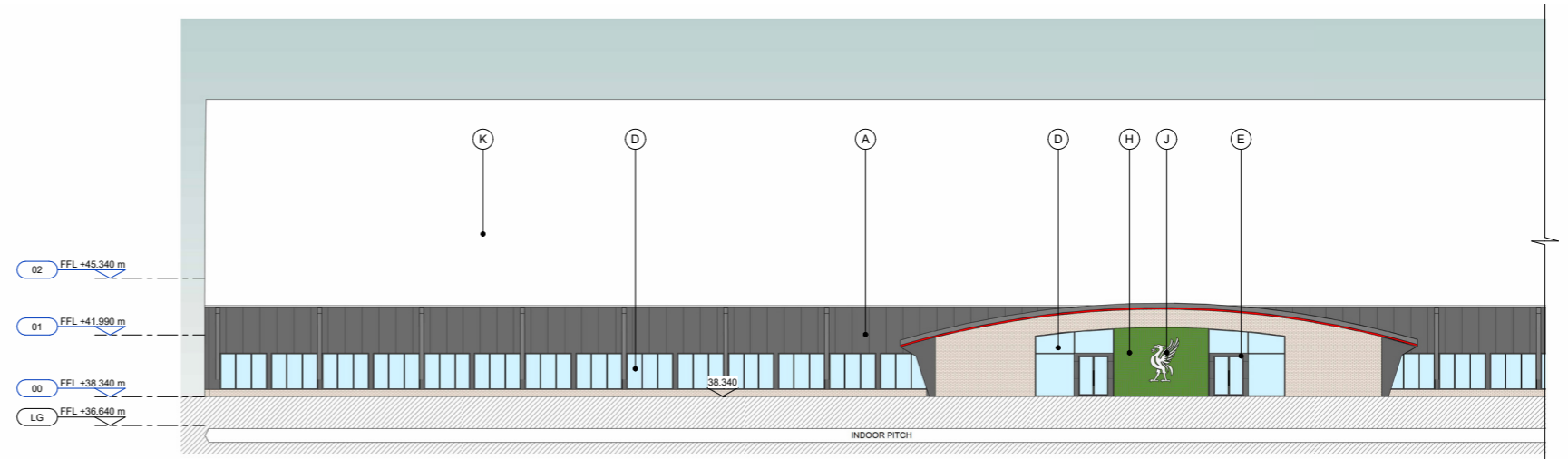
4.23 THE ACADEMY APPEARANCE

EAST ELEVATION

The Eastern elevation contains the Academy entrance and the indoor pitch viewing platform entrance.

The reception features a grey cladding portal with double height glazing allowing natural light into the atrium space. The entrance area is largely buff brick with LFC branding and red return feature.

The indoor pitch features a low level buff brick plinth with ribbon windows and grey cladding panels above. This grey cladding is continued into the viewing platform entrance where glazing allows for glimpses inside. The LFC branding is surrounded by a green wall, incorporating an aspect of nature into the design.



MATERIALS

- (A) GREY CLADDING
- (B) BUFF BRICKWORK
- (C) GREY PAINTED BRICKWORK
- (D) CURTAIN WALL
- (E) RED CLADDING
- (F) LOUVRE PANELS
- (G) ETFE
- (H) LIVING WALL
- (I) GREY METAL ROOF
- (J) SIGNAGE
- (K) WHITE TRANSLUCENT ROOF FABRIC
- (L) ROLLER SHUTTER DOOR

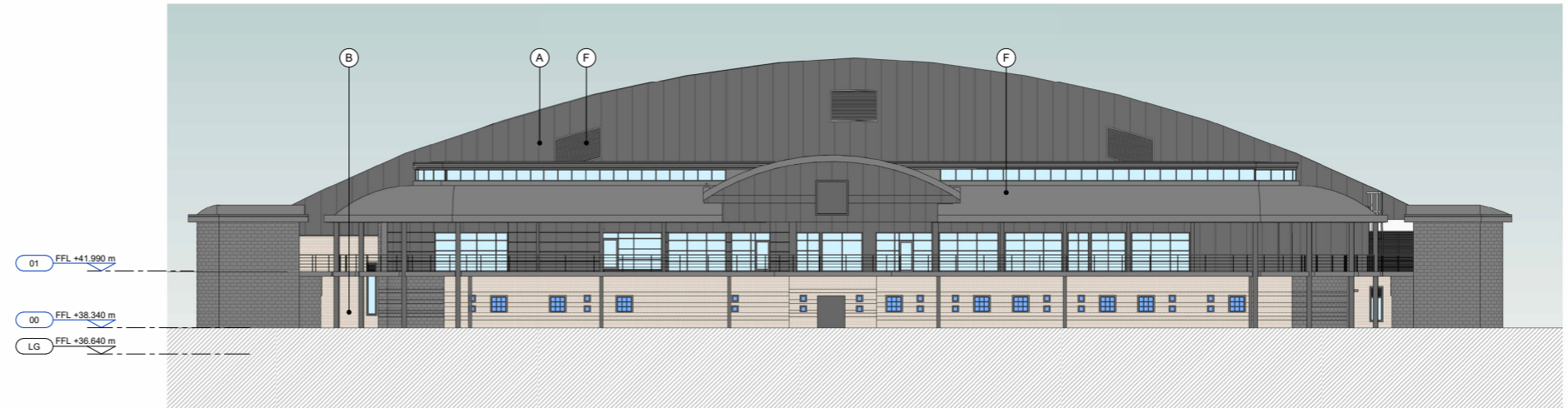
4.23 THE ACADEMY APPEARANCE

NORTH ELEVATION

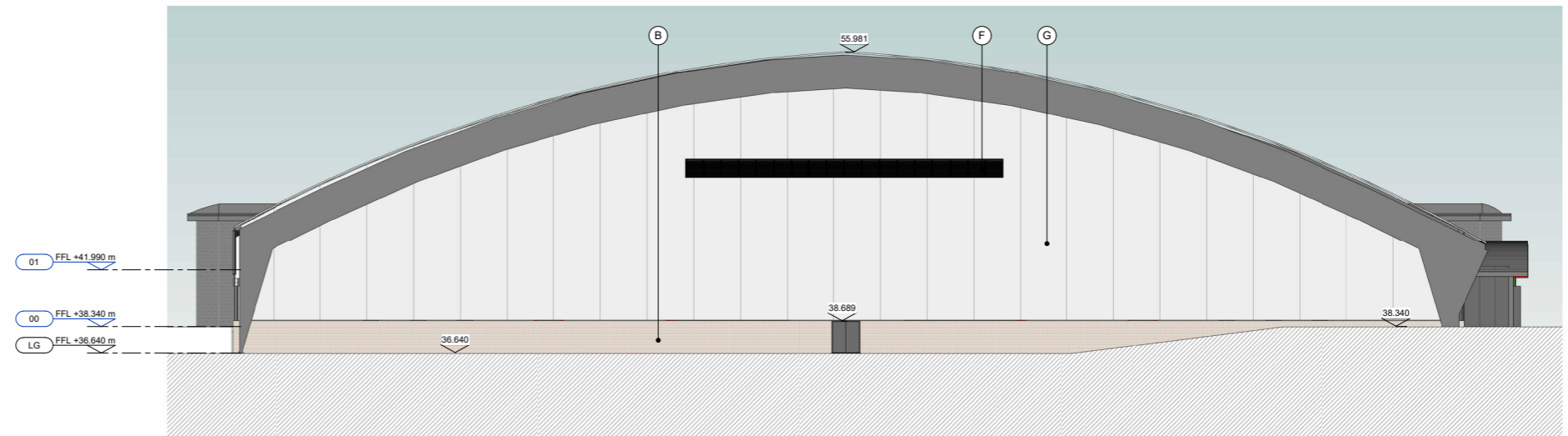
Viewing from the North, the Academy elevation remains unchanged, with the addition of the indoor pitch dome behind. The dome's gable wall is clad in grey cladding panels with a series of louvres for pitch ventilation.

SOUTH ELEVATION

The southern elevation of the indoor pitch comprises the dome's other gable wall, constructed from transparent ETFE with a low level buff brickwork plinth.



VIEW FROM NORTH



VIEW FROM SOUTH

MATERIALS

- (A) GREY CLADDING
- (B) BUFF BRICKWORK
- (C) GREY PAINTED BRICKWORK
- (D) CURTAIN WALL
- (E) RED CLADDING
- (F) LOUVRE PANELS
- (G) ETFE
- (H) LIVING WALL
- (I) GREY METAL ROOF
- (J) SIGNAGE
- (K) WHITE TRANSLUCENT ROOF FABRIC
- (L) ROLLER SHUTTER DOOR

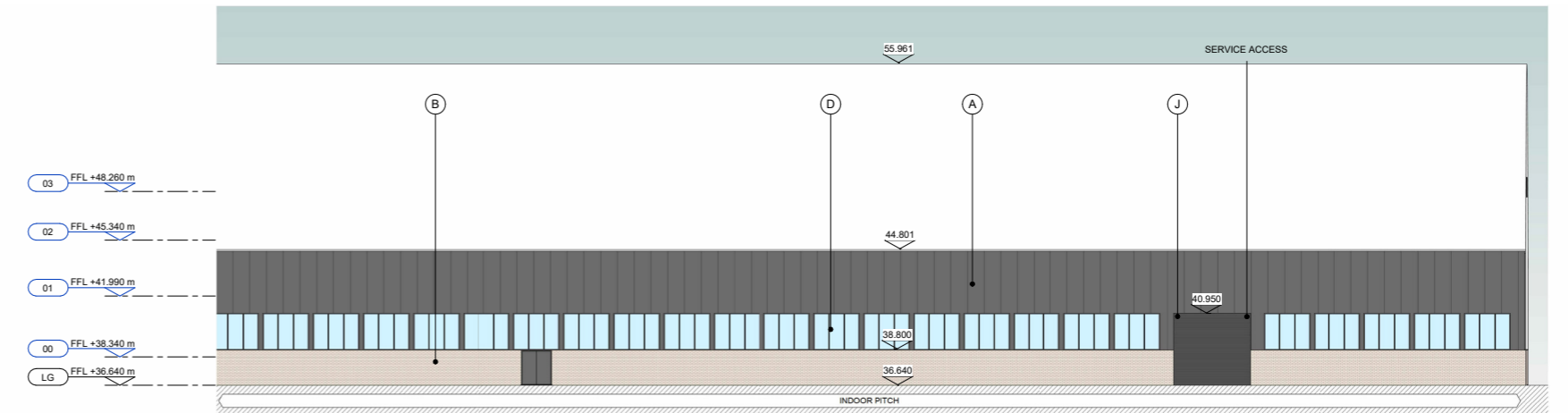
4.23 THE ACADEMY APPEARANCE

WEST ELEVATION

The Western elevation follows the same design logic of the Eastern elevation with grey cladding panels and ribbon windows. The buff brick wall is continued around the entire perimeter of the indoor pitch, however, it is approximately 2.1 metres high on this elevation to account for the site's topographical changes.

The Western elevation of the indoor pitch allows for two pitch maintenance access doors and one fire exit.

The link building materiality follows a the logic of buff brick to the ground floor with grey cladding above to mirror the existing academy building,



3 ELEVATION
PLANNING PROPOSED ELEVATION - WEST - Callout 2 1 : 200

- MATERIALS**
- (A) GREY CLADDING
 - (B) BUFF BRICKWORK
 - (C) GREY PAINTED BRICKWORK
 - (D) CURTAIN WALL
 - (E) RED CLADDING
 - (F) LOUVRE PANELS
 - (G) ETFE
 - (H) LIVING WALL
 - (I) GREY METAL ROOF
 - (J) SIGNAGE
 - (K) WHITE TRANSLUCENT ROOF FABRIC
 - (L) ROLLER SHUTTER DOOR

4.31 THE SPECTATOR STAND LAYOUT

STAND ACCOMMODATION

The spectator stand is 494 seats in total, including 6 wheelchair spaces and 6 companion seats.

The building behind the stand is for use by players, and officials only. Spectator WC provision is accommodated at the Eastern end of the stand.

A central pitch access, with team congregation space, is provided for the players to access the pitch and recreates elements of the stadium match-day experience.

The building is designed to avoid the existing borehole and irrigation compound and maintain the existing access arrangements.

