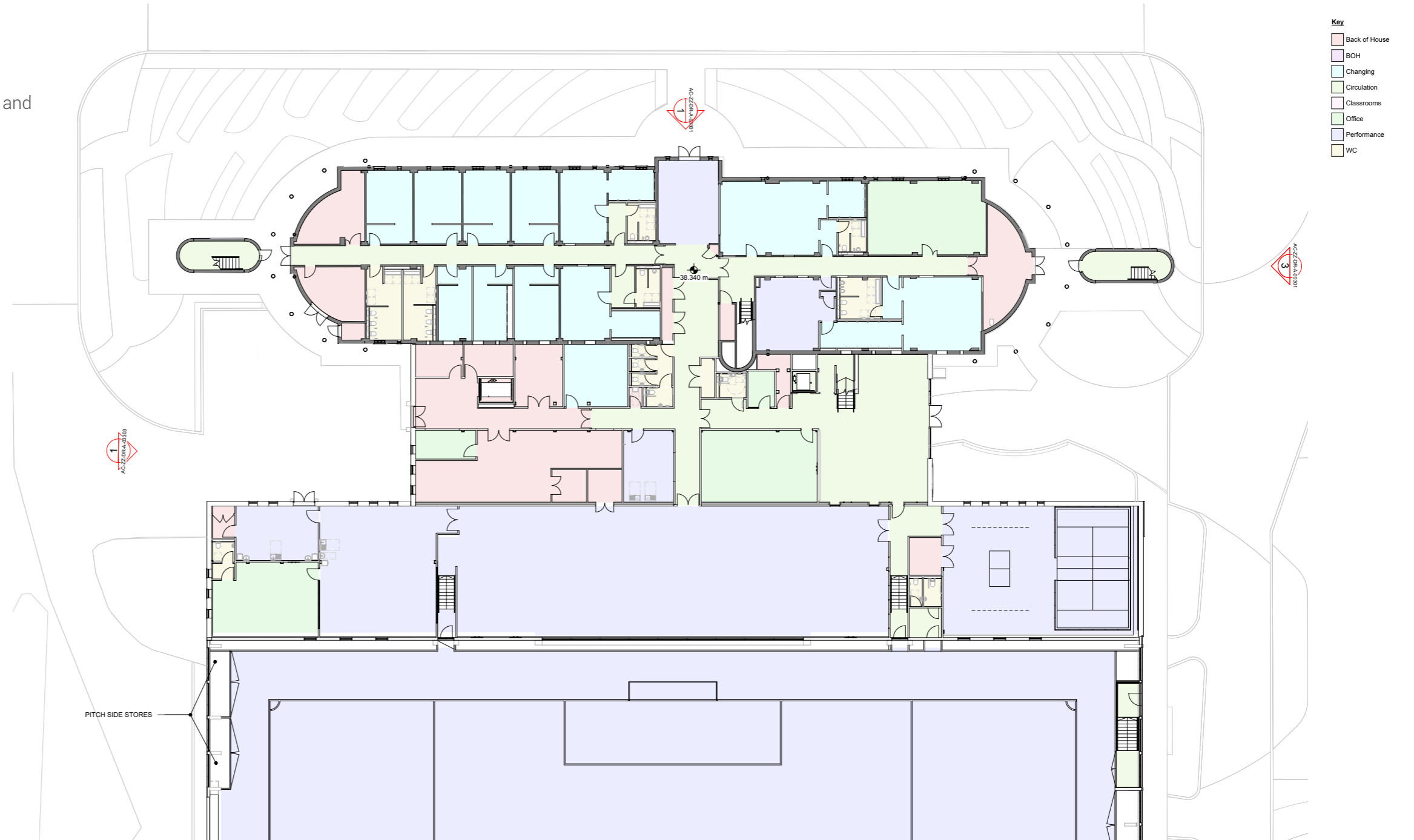


4.21 THE ACADEMY LAYOUT - GROUND FLOOR

LAYOUT

The ground floor will contain changing and performance areas, in addition to a new reception and back of house support spaces.



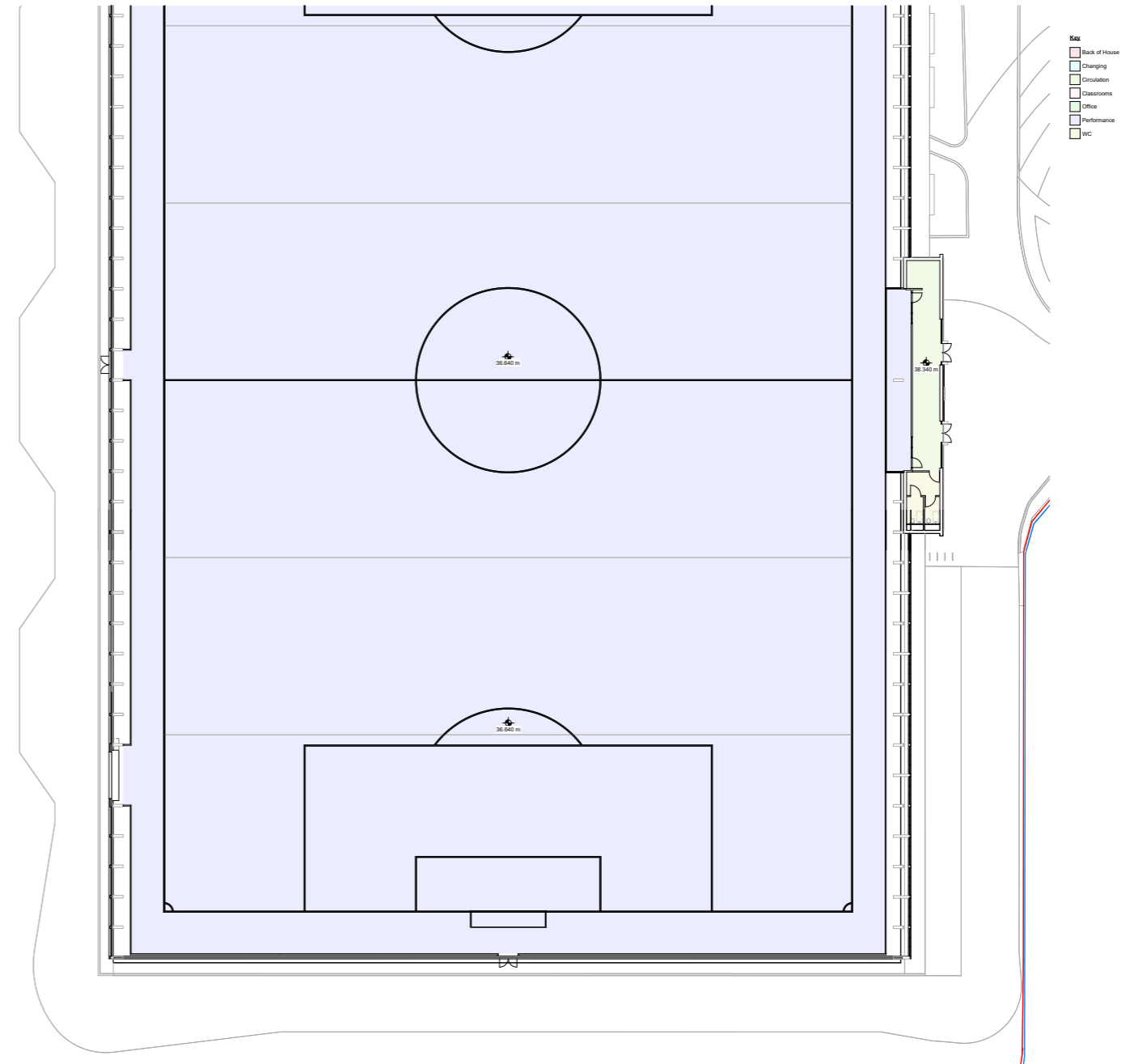
4.21 THE ACADEMY LAYOUT - INDOOR PITCH

LAYOUT

The indoor pitch structure houses a full-size artificial pitch (68x105m).

Centred on the halfway line is a spectator viewing platform for parents, family and visitors. As well as a seated viewing area, the viewing platform structure includes WCs and a refreshments area.

The two long sides of the pitch allow provision for pitch side storage within the rebound wall zone.

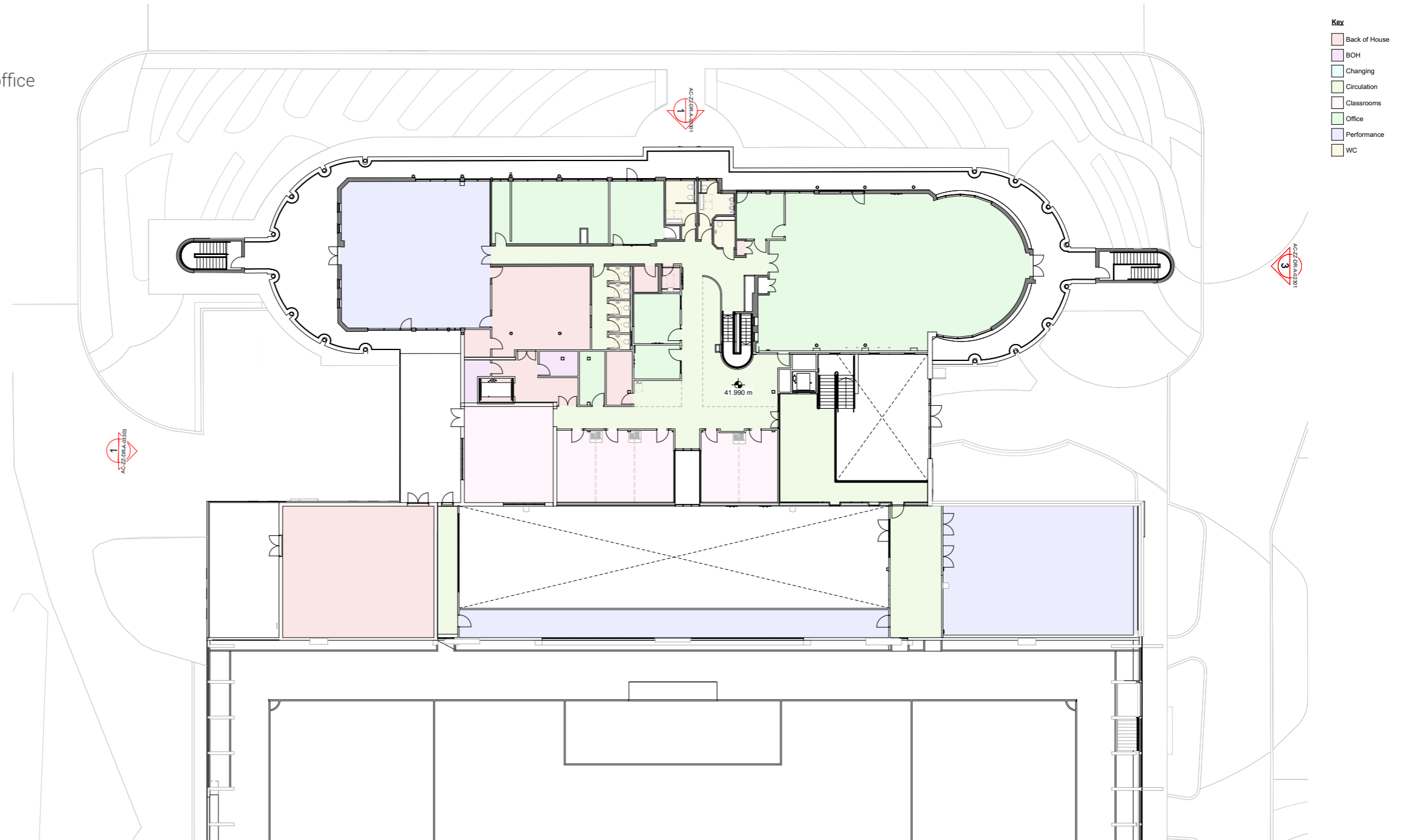


GROUND FLOOR - INDOOR PITCH

4.21 THE ACADEMY LAYOUT - FIRST FLOOR

LAYOUT

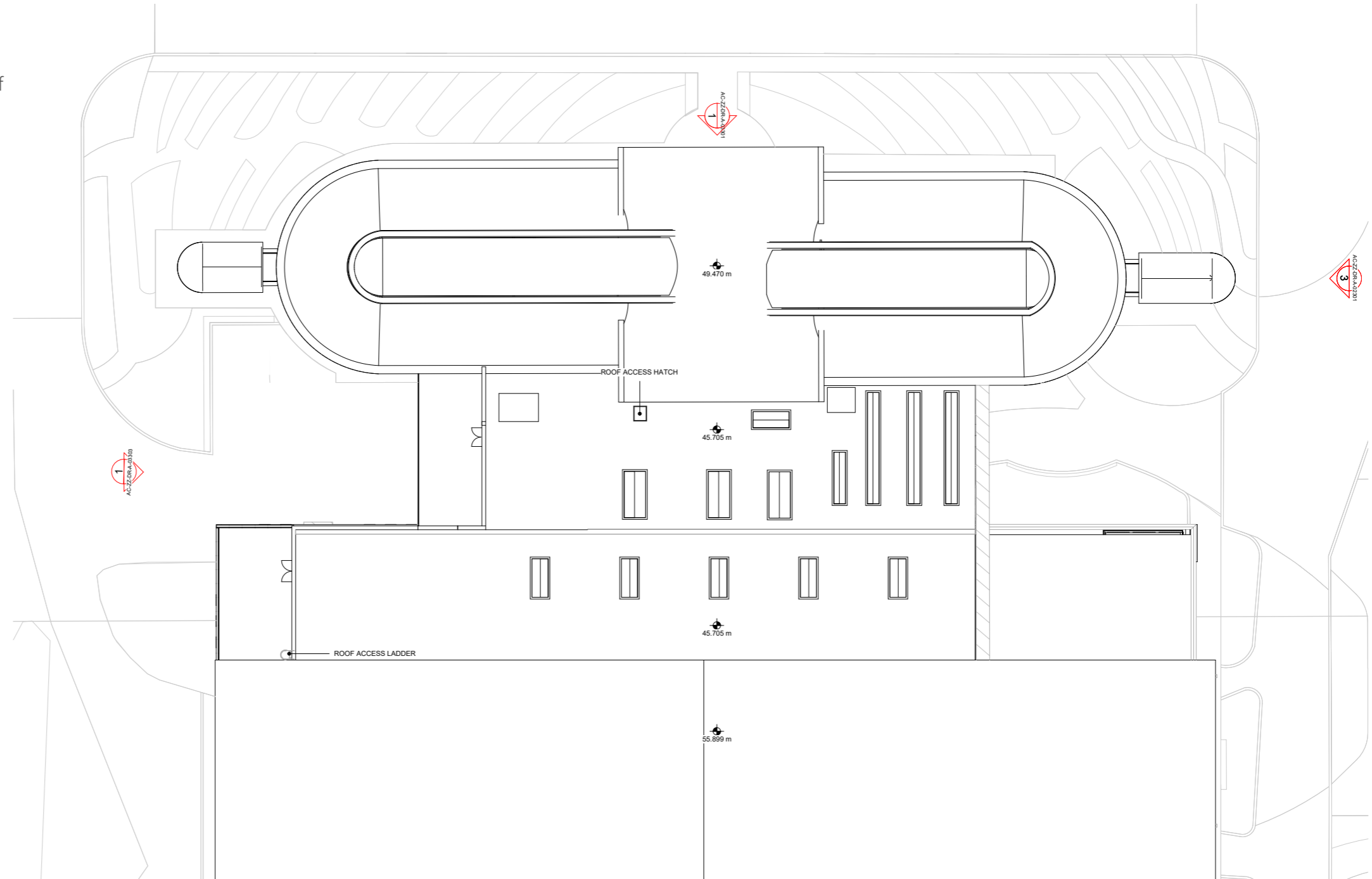
The first floor includes the education, dining and office elements of the facility.



4.21 THE ACADEMY LAYOUT - ROOF LEVEL

LAYOUT

The roof level of the building contains a number of roof lights, bringing natural light into the building.



4.22 THE ACADEMY SCALE

SCREENING

Along the boundary between the proposed indoor pitch and Simonswood Lane, there is a topographical bund with planting. This planting is an average of 6 metres in height, which creates a significant level of screening, and therefore reduces the visual impact of the indoor pitch dome.

OFFSET FROM BOUNDARY

The eaves of the proposed indoor pitch are 10 metres in height from the datum level of Simonswood Lane. The eaves line is set back from the site boundary by 47 metres, with the highest point of the dome set back further by approximately 30 metres. Along with the boundary screening, this offset reduces the visual impact of the indoor pitch dome on the neighbouring houses.

