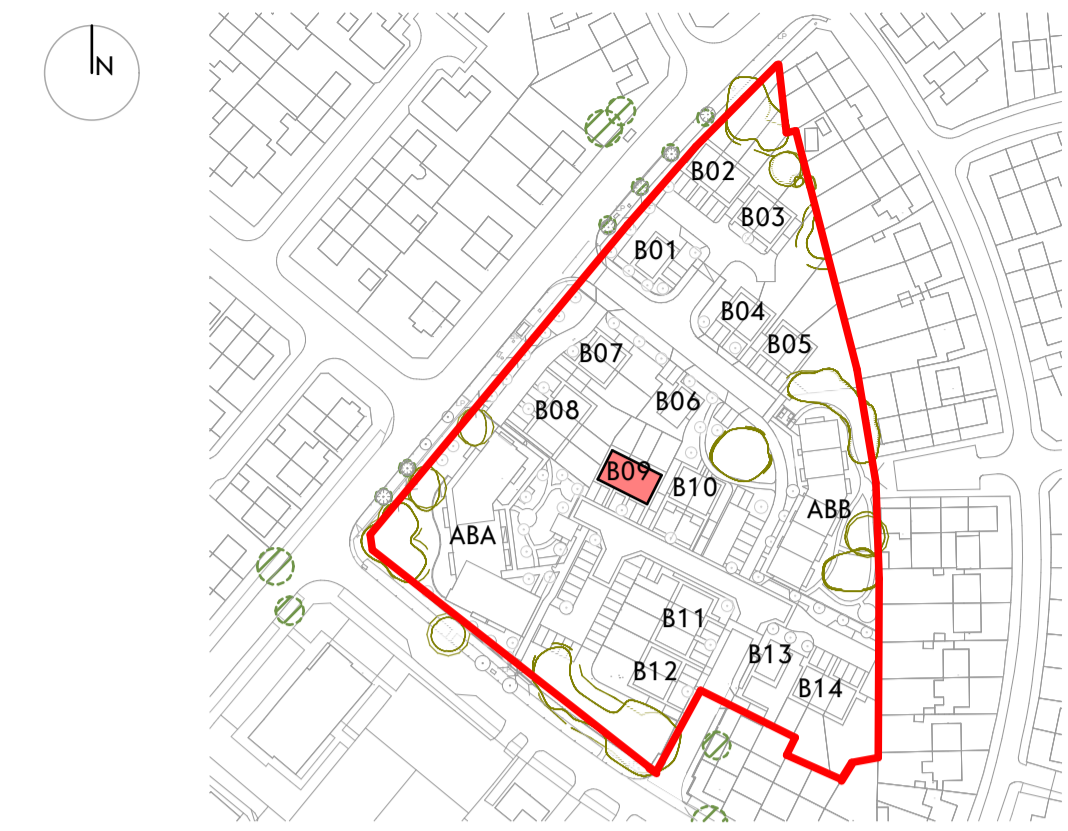


Ground Floor Plan



First Floor Plan



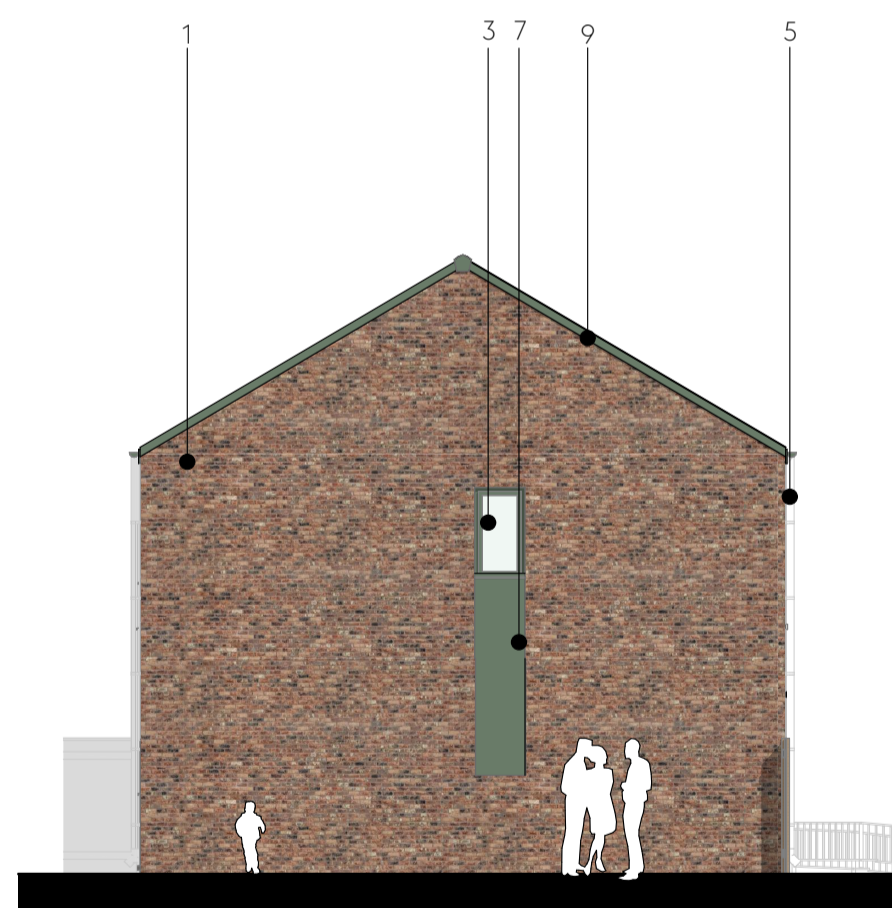
E-01 Elevation



E-02 Elevation



E-03 Elevation



E-04 Elevation

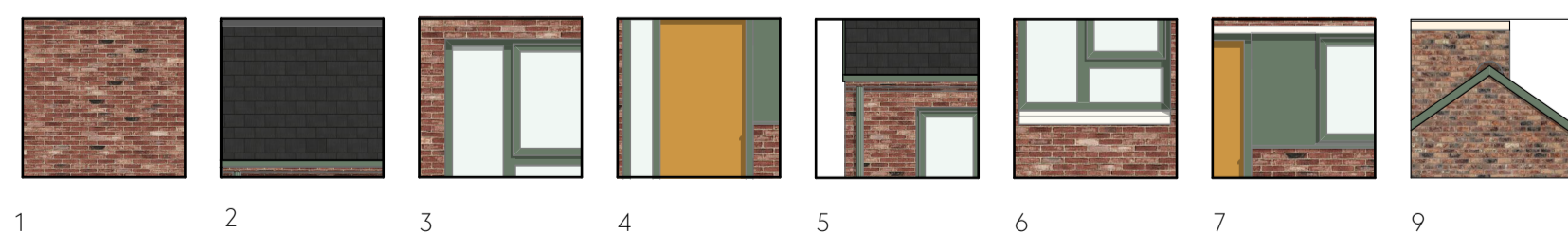


Front View



Back View

Material Key



1. Brick, colour varies, sand coloured natural mortar.
2. Dark grey concrete slate roof tiles.
3. Windows and back door uPVC in olive green colour.
4. Composite door, oak colour.
5. UPVC downpipes and gutters, with matching fascia dark green colour.
6. Wetcast cill, head, coping and window surrounds, off white colour.
7. Fibre cement green infill panel.
9. UPVC linear verge flashing.

This drawing is the property of GWP Architects. Copyright is reserved by them and the drawing is issued on the condition that it is not copied, reproduced, mirrored or displayed in any manner without the prior written consent of GWP Architects. All drawings and specifications should be read in conjunction with the project health and safety plan. Any possible conflicts should be presented to the Planning Consultant. All work to be carried out in accordance with current Building Regulations. Contractors must verify all dimensions at the job before commencing any work or making shop drawings. Written dimensions should be taken. Do not scale off drawing. Do not take digital dimensions from this drawing. Any discrepancies to be reported to the Architect.

0 1m 5m
Scale = 1:100 @A1

Rev	Date	Comment	Dr	Ch
P07	22.12.25	General Update	VT	DT
P06	24.10.25	Planning Issue	AK	DT
P05	30.09.25	General Update	AK	DT
P04	27.08.25	General update	VT	DT
P03	20.09.24	General update and location plan	AK	JB
P02	03.07.24	General Update	JB	DT
P01	17.05.24	First Issue	EA	CT

Client	Livv Housing Group
Job Title	Livv Housing Gaywood Green
Drawn/Checked	VT / CT
Drawing Status	S2 - Planning

Name	(529)2316-GWP-01-XX-D-A-(PA)-0038
Scale	A1@1:100
Revision	P07
First Issue	17.05.24

CHARTERED ARCHITECTS
INTERIOR DESIGNERS
SPACE PLANNERS
PROJECT MANAGERS
LANDSCAPE ARCHITECTS

03 01 Tower Works, 2 Globe Road, Leeds LS11 5DG
+44(0)113 266 6044 (t) +44(0)113 268 1839 (f)
architects@gwp-arch.com | www.gwp-arch.com